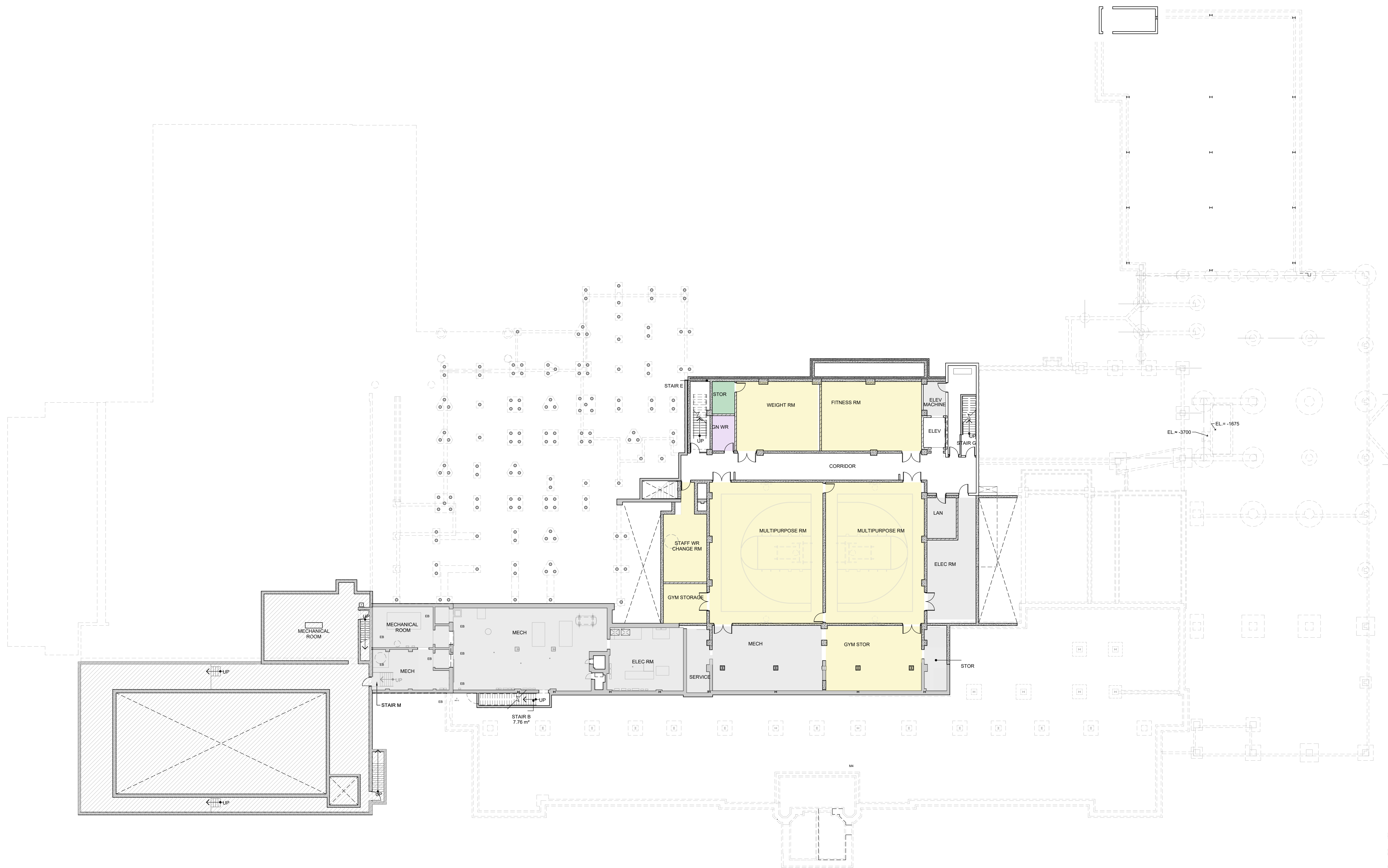


APPENDIX A



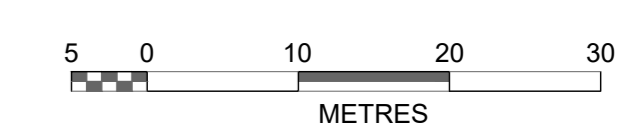
**GENERAL NOTE**

1. THESE PLANS ARE A WORK IN PROGRESS AND ARE INTENDED AS AN UPDATE TO THE BASE BUILDING PLANS TO REFLECT THE FINDINGS OF THE FEASIBILITY ANALYSIS.
2. UPDATED INTERIOR FIT-UP PLANS CONFIRMING THE PROGRAM ASSIGNMENTS ARE IN DEVELOPMENT BY CS&P.
3. PLAN AREAS THAT REQUIRE FURTHER DEVELOPMENT TO CONFIRM THE LAYOUTS ARE IDENTIFIED ON THE PLAN WITH REVISION CLOUDS. THE INTENT IS TO REUSE AS MANY EXISTING WALLS AND DOOR OPENINGS AS POSSIBLE. DOOR OPENINGS, CHANGE ROOM LAYOUTS AND CUSTODIAL LAYOUTS ARE UNDER DEVELOPMENT AND WILL BE FURTHER REFINED TO REFLECT THIS STRATEGY.
4. DOUBLE HEIGHT OPENINGS ARE THAT ARE SHOWN FOR THE MUSIC ROOMS AND LIBRARY LEARNING COMMONS ARE PRELIMINARY. STRUCTURAL COORDINATION AND DESIGN IS REQUIRED TO CONFIRM THE OPTIMAL SIZE AND LOCATION.

**LEGEND**

- CLASSROOMS
- SCIENCE LABS
- MUSIC AND ARTS
- TECHNICAL LABS
- SPECIAL EDUCATION AND RESOURCE
- FITNESS AND WELLNESS
- AUDITORIUM
- CAFETERIA AND LEARNING COMMONS
- OPERATIONAL AREAS
- ADMINISTRATION
- WASHROOMS
- SERVICES SPACES
- OUTLINE OF 1929 BUILDING
- A1.0 SPACE LAYOUT SHEET REFERENCE

# BASEMENT PLAN



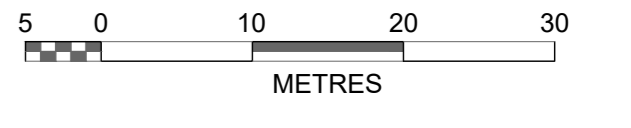


**GENERAL NOTE**

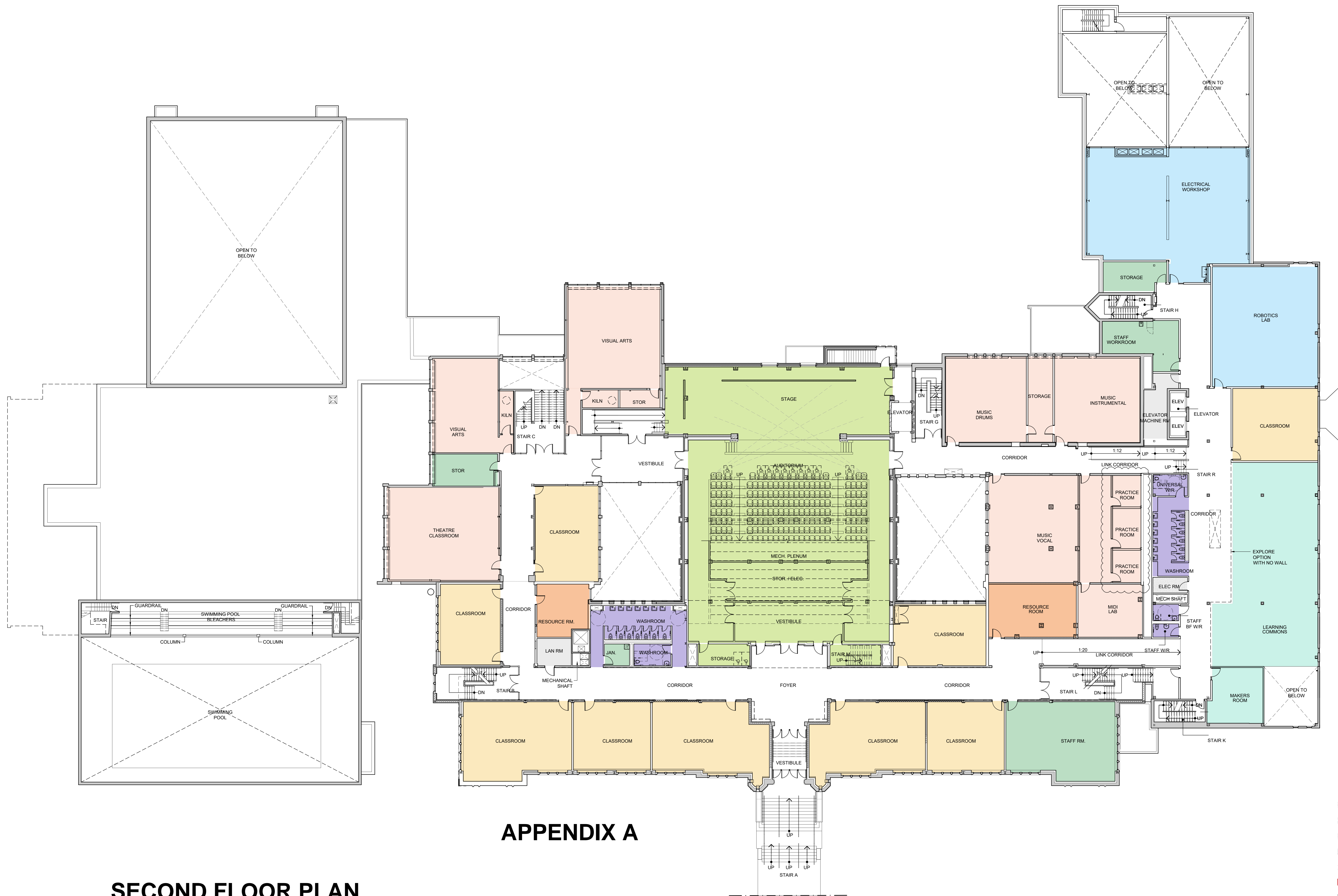
1. THESE PLANS ARE A WORK IN PROGRESS AND ARE INTENDED AS AN UPDATE TO THE BASE BUILDING PLANS TO REFLECT THE FINDINGS OF THE FEASIBILITY ANALYSIS.
2. UPDATED INTERIOR FIT-UP PLANS CONFIRMING THE PROGRAM ASSIGNMENTS ARE IN DEVELOPMENT BY CS&P.
3. PLAN AREAS THAT REQUIRE FURTHER DEVELOPMENT TO CONFIRM THE LAYOUTS ARE IDENTIFIED ON THE PLAN WITH REVISION CLOUDS. THE INTENT IS TO REUSE AS MANY EXISTING WALLS AND DOOR OPENINGS AS POSSIBLE. DOOR OPENINGS, CHANGE ROOM LAYOUTS AND CUSTODIAL LAYOUTS ARE UNDER DEVELOPMENT AND WILL BE FURTHER REFINED TO REFLECT THIS STRATEGY.
4. DOUBLE HEIGHT OPENINGS ARE THAT ARE SHOWN FOR THE MUSIC ROOMS AND LIBRARY LEARNING COMMONS ARE PRELIMINARY. STRUCTURAL COORDINATION AND DESIGN IS REQUIRED TO CONFIRM THE OPTIMAL SIZE AND LOCATION.



- LEGEND**
- CLASSROOMS
  - SCIENCE LABS
  - MUSIC AND ARTS
  - TECHNICAL LABS
  - SPECIAL EDUCATION AND RESOURCE
  - FITNESS AND WELLNESS
  - AUDITORIUM
  - CAFETERIA AND LEARNING COMMONS
  - OPERATIONAL AREAS
  - ADMINISTRATION
  - WASHROOMS
  - SERVICES SPACES
  - OUTLINE OF 1929 BUILDING
  - A1.0 SPACE LAYOUT SHEET REFERENCE

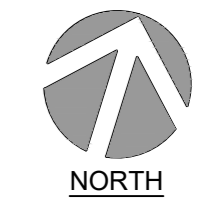


# FIRST FLOOR PLAN

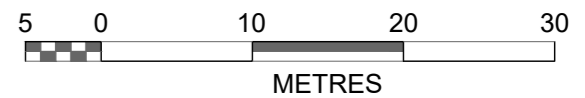


**GENERAL NOTE**

1. THESE PLANS ARE A WORK IN PROGRESS AND ARE INTENDED AS AN UPDATE TO THE BASE BUILDING PLANS TO REFLECT THE FINDINGS OF THE FEASIBILITY ANALYSIS.
2. UPDATED INTERIOR FIT-UP PLANS CONFIRMING THE PROGRAM ASSIGNMENTS ARE IN DEVELOPMENT BY CS&P.
3. PLAN AREAS THAT REQUIRE FURTHER DEVELOPMENT TO CONFIRM THE LAYOUTS ARE IDENTIFIED ON THE PLAN WITH REVISION CLOUDS. THE INTENT IS TO REUSE AS MANY EXISTING WALLS AND DOOR OPENINGS AS POSSIBLE. DOOR OPENINGS, CHANGE ROOM LAYOUTS AND CUSTODIAL LAYOUTS ARE UNDER DEVELOPMENT AND WILL BE FURTHER REFINED TO REFLECT THIS STRATEGY.
4. DOUBLE HEIGHT OPENINGS ARE THAT ARE SHOWN FOR THE MUSIC ROOMS AND LIBRARY LEARNING COMMONS ARE PRELIMINARY. STRUCTURAL COORDINATION AND DESIGN IS REQUIRED TO CONFIRM THE OPTIMAL SIZE AND LOCATION.



- LEGEND**
- CLASSROOMS
  - SCIENCE LABS
  - MUSIC AND ARTS
  - TECHNICAL LABS
  - SPECIAL EDUCATION AND RESOURCE
  - FITNESS AND WELLNESS
  - AUDITORIUM
  - CAFETERIA AND LEARNING COMMONS
  - OPERATIONAL AREAS
  - ADMINISTRATION
  - WASHROOMS
  - SERVICES SPACES
  - OUTLINE OF 1929 BUILDING
  - A1.0 SPACE LAYOUT SHEET REFERENCE



# SECOND FLOOR PLAN

## APPENDIX A

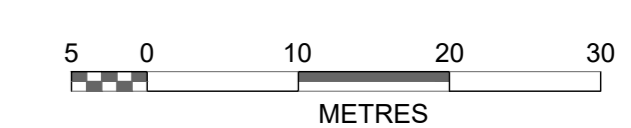


**GENERAL NOTE**

1. THESE PLANS ARE A WORK IN PROGRESS AND ARE INTENDED AS AN UPDATE TO THE BASE BUILDING PLANS TO REFLECT THE FINDINGS OF THE FEASIBILITY ANALYSIS.
2. UPDATED INTERIOR FIT-UP PLANS CONFIRMING THE PROGRAM ASSIGNMENTS ARE IN DEVELOPMENT BY CS&P.
3. PLAN AREAS THAT REQUIRE FURTHER DEVELOPMENT TO CONFIRM THE LAYOUTS ARE IDENTIFIED ON THE PLAN WITH REVISION CLOUDS. THE INTENT IS TO REUSE AS MANY EXISTING WALLS AND DOOR OPENINGS AS POSSIBLE. DOOR OPENINGS, CHANGE ROOM LAYOUTS AND CUSTODIAL LAYOUTS ARE UNDER DEVELOPMENT AND WILL BE FURTHER REFINED TO REFLECT THIS STRATEGY.
4. DOUBLE HEIGHT OPENINGS ARE THAT ARE SHOWN FOR THE MUSIC ROOMS AND LIBRARY LEARNING COMMONS ARE PRELIMINARY. STRUCTURAL COORDINATION AND DESIGN IS REQUIRED TO CONFIRM THE OPTIMAL SIZE AND LOCATION.



- LEGEND**
- CLASSROOMS
  - SCIENCE LABS
  - MUSIC AND ARTS
  - TECHNICAL LABS
  - SPECIAL EDUCATION AND RESOURCE
  - FITNESS AND WELLNESS
  - AUDITORIUM
  - CAFETERIA AND LEARNING COMMONS
  - OPERATIONAL AREAS
  - ADMINISTRATION
  - WASHROOMS
  - SERVICES SPACES
  - OUTLINE OF 1929 BUILDING
  - A1.0 SPACE LAYOUT SHEET REFERENCE



# THIRD FLOOR PLAN

