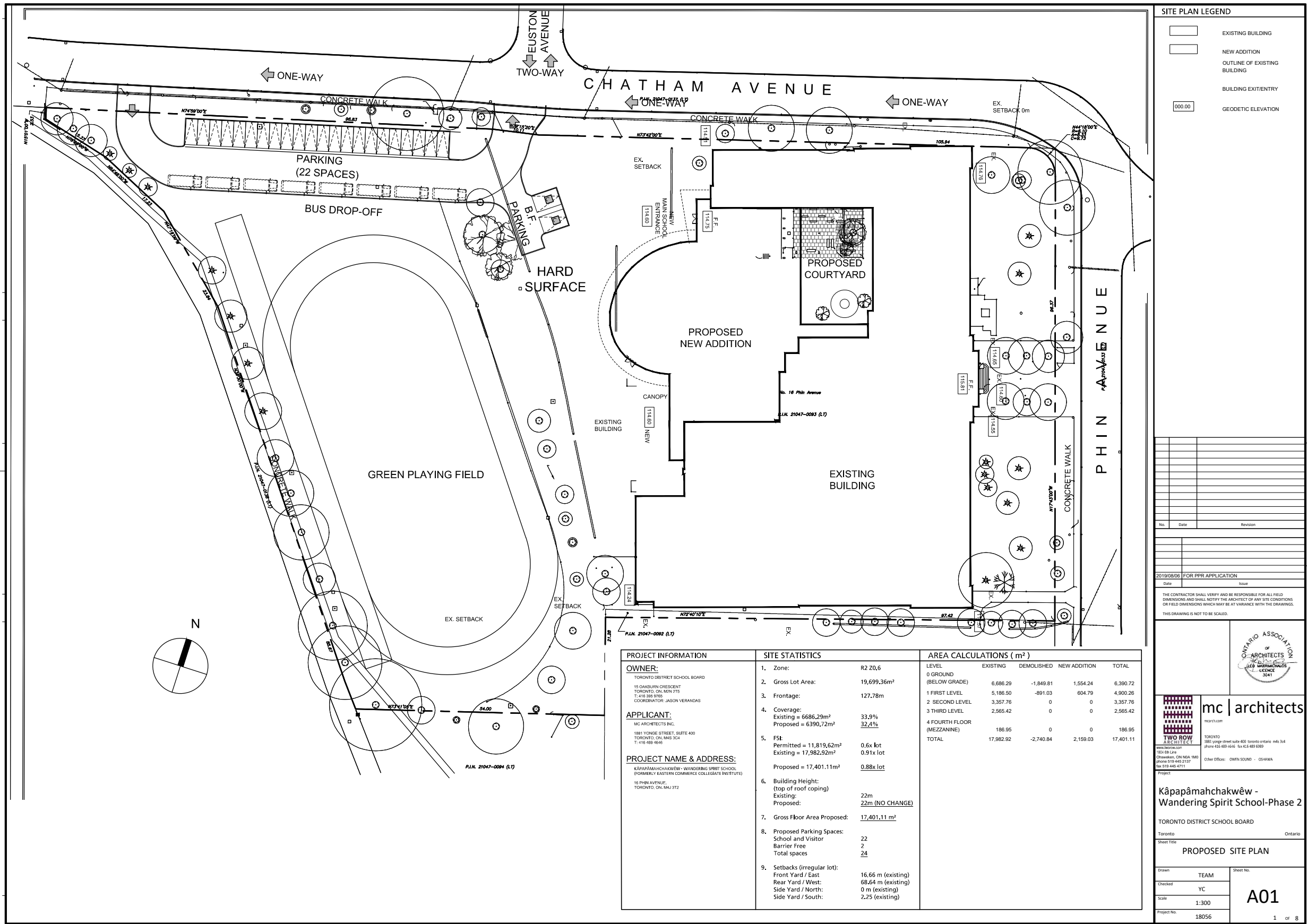
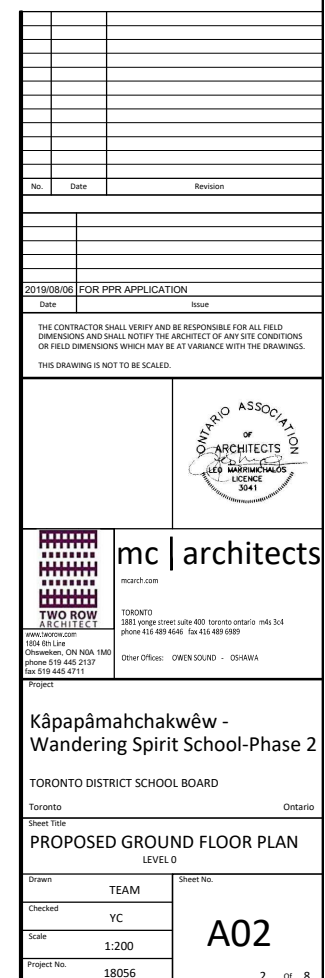
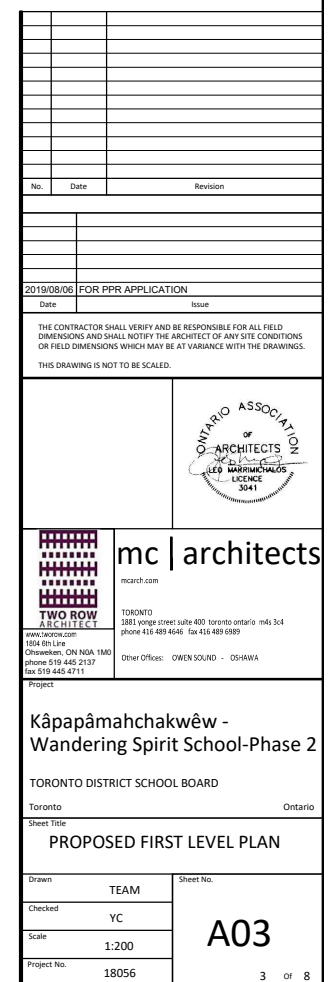
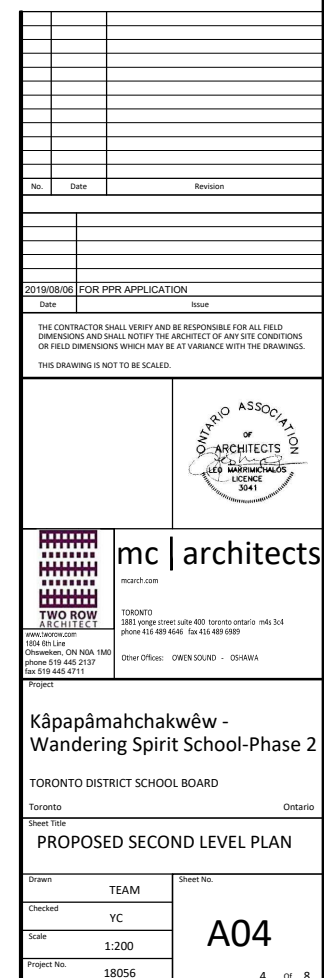


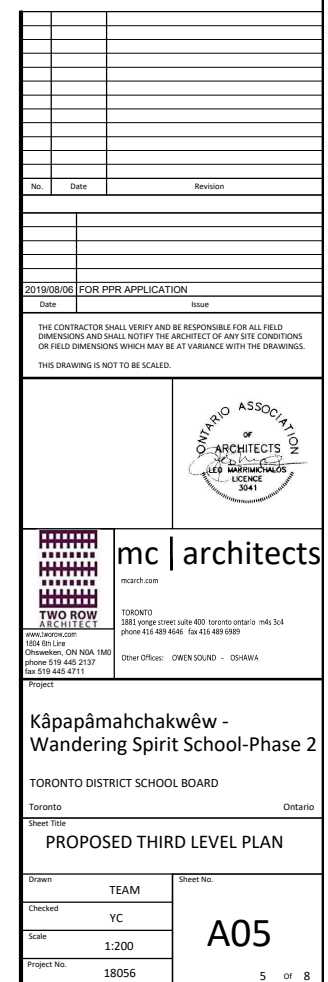
APPENDIX B











6 of 8

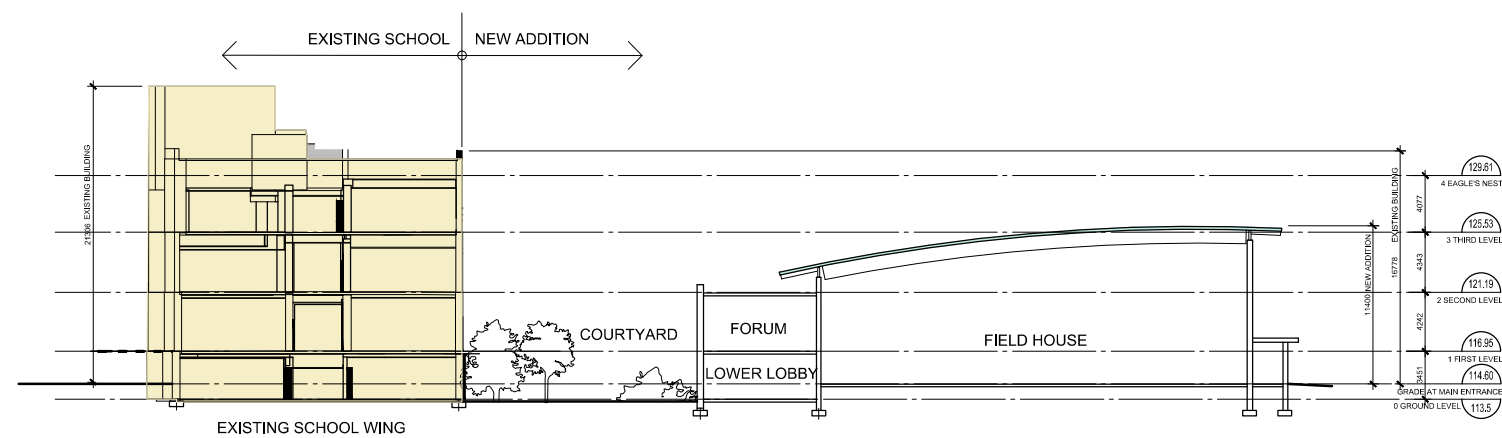




Sheet Title

EXISTING ELEVATIONS

Drawn	TEAM
Checked	YC
Scale	1:200
Project No.	18056

**A07**



No.	Date	Revision	
2019/08/06	FOR PPR APPLICATION		
Date	Issue		
<p>THE CONTRACTOR SHALL VERIFY AND BE RESPONSIBLE FOR ALL FIELD DIMENSIONS AND SHALL NOTIFY THE ARCHITECT OF ANY SITE CONDITIONS OR FIELD DIMENSIONS WHICH MAY BE AT VARIANCE WITH THE DRAWINGS.</p> <p>THIS DRAWING IS NOT TO BE SCALED.</p>			
 <p><b>TWO ROW ARCHITECTS</b> www.tworow.com 104-08 Line Chesapeake, ON N6A 1M0 phone 519 445 2137 fax 519 445 4717</p>		 <p><b>mc   architects</b> mcarch.com</p> <p>TORONTO 3851 vantage court suite 400 toronto ontario m4s 3c4 phone 416 489 4646 fax 416 489 6889</p> <p>Other Offices: OWEN SOUND - OSAWA</p>	
Project			
<p><b>Kâpawâmahchakwêw - Wandering Spirit School-Phase 2</b></p> <p>TORONTO DISTRICT SCHOOL BOARD</p> <p>Toronto Ontario</p> <p>Sheet Title</p> <p><b>BUILDING SECTION</b></p>			
Drawn	TEAM		<p>Sheet No.</p> <p><b>A08</b></p> <p>8 of 8</p>
Checked	YC		
Scale	1:200		
Project No.	18056		