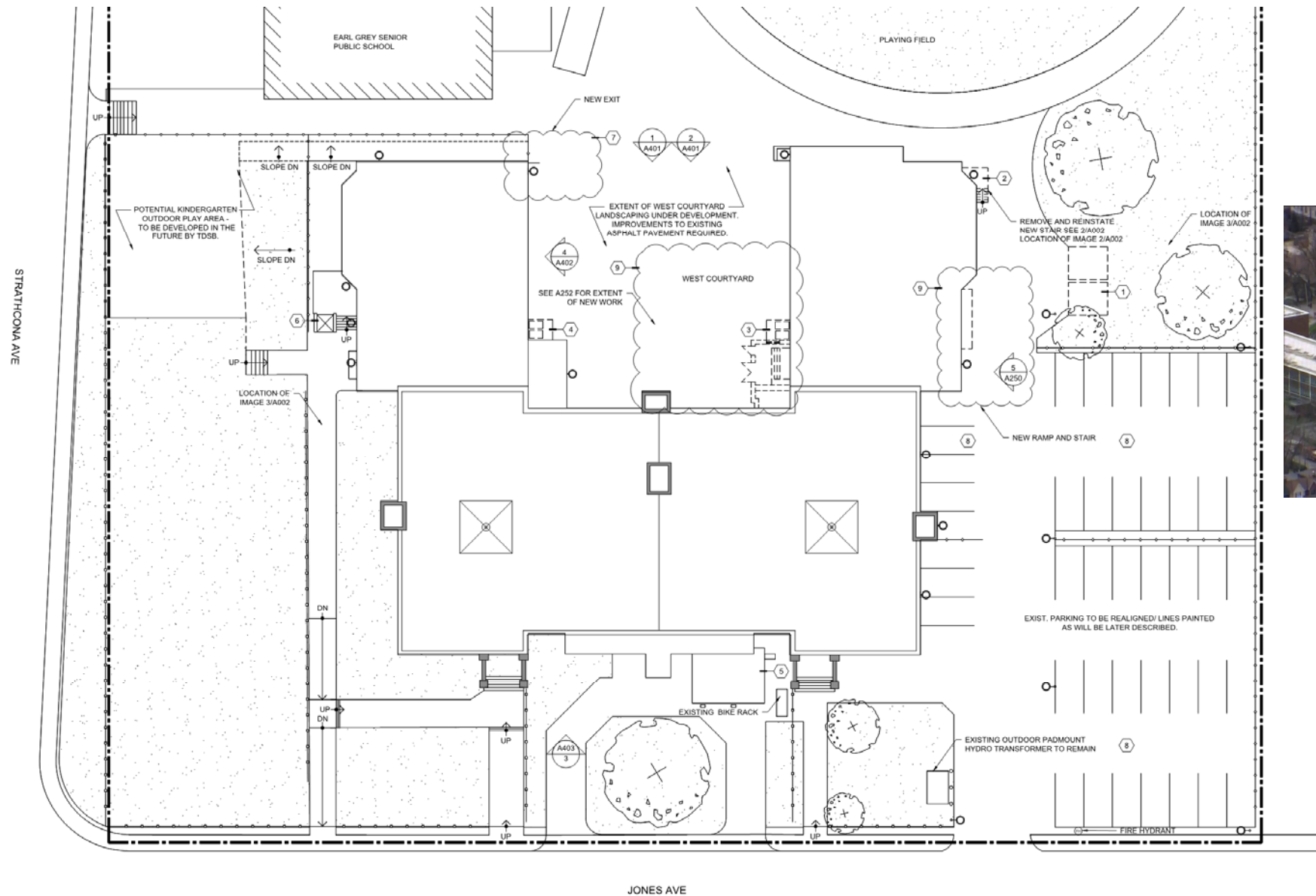


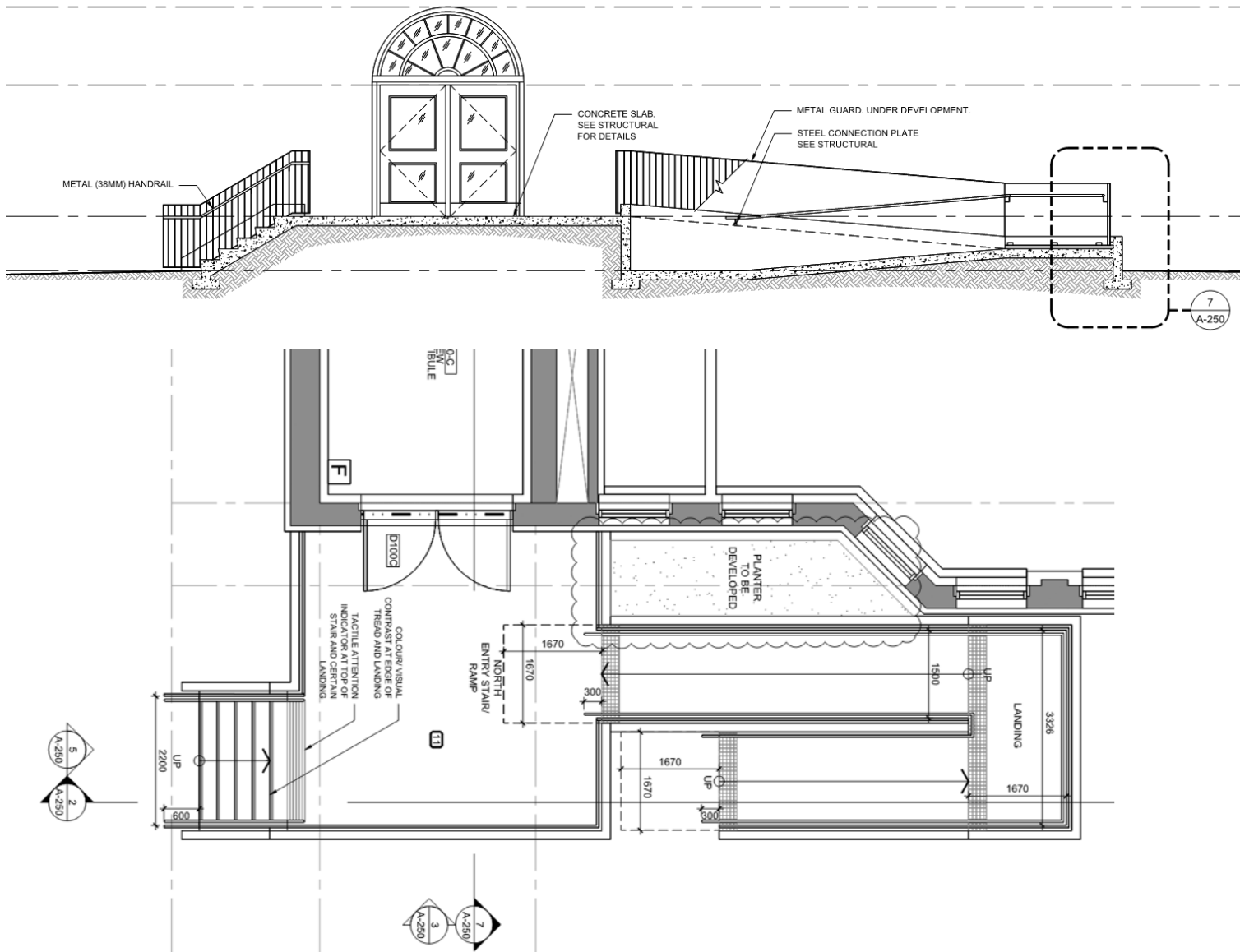
SITE PLAN – SELECT DEMO AND NEW WORK



PROJECT SUMMARY - APPENDIX A:
These excerpted drawings from the overall Design Development package are intended to show the overall scope of work and the TDSB program accommodation



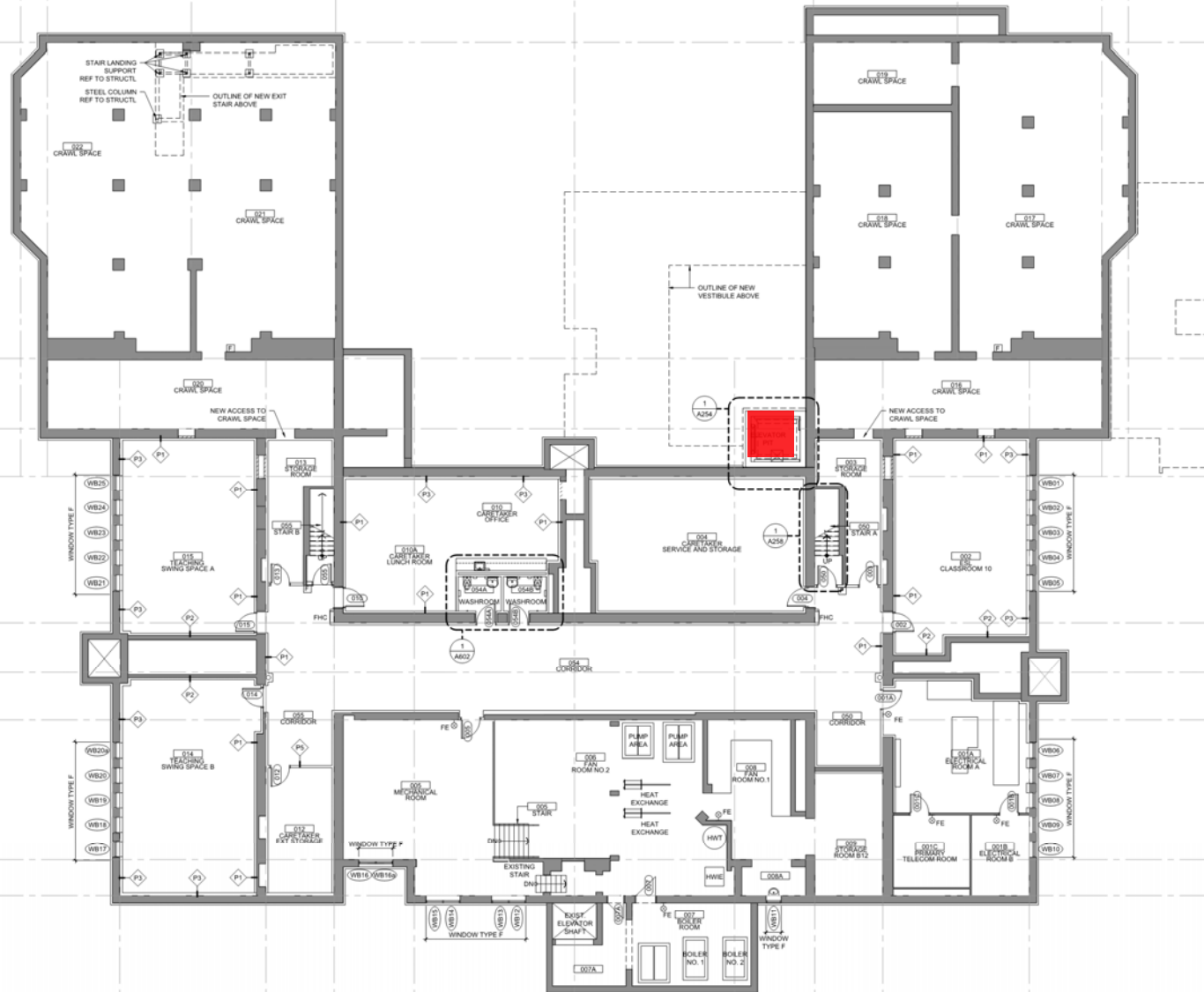
EXTERIOR RAMP AND STAIR – NORTH ENTRY – UNDERDEVELOPMENT



BASEMENT – NEW WORK - UNDER DEVELOPMENT

Basement underdevelopment, updates includes:

- New stairs and guardrail to sub-basement
- Concrete pads to elevate new equipment
- 1 additional washroom; re configuration of caretaker washroom
- Coordination with M/E/S to-date

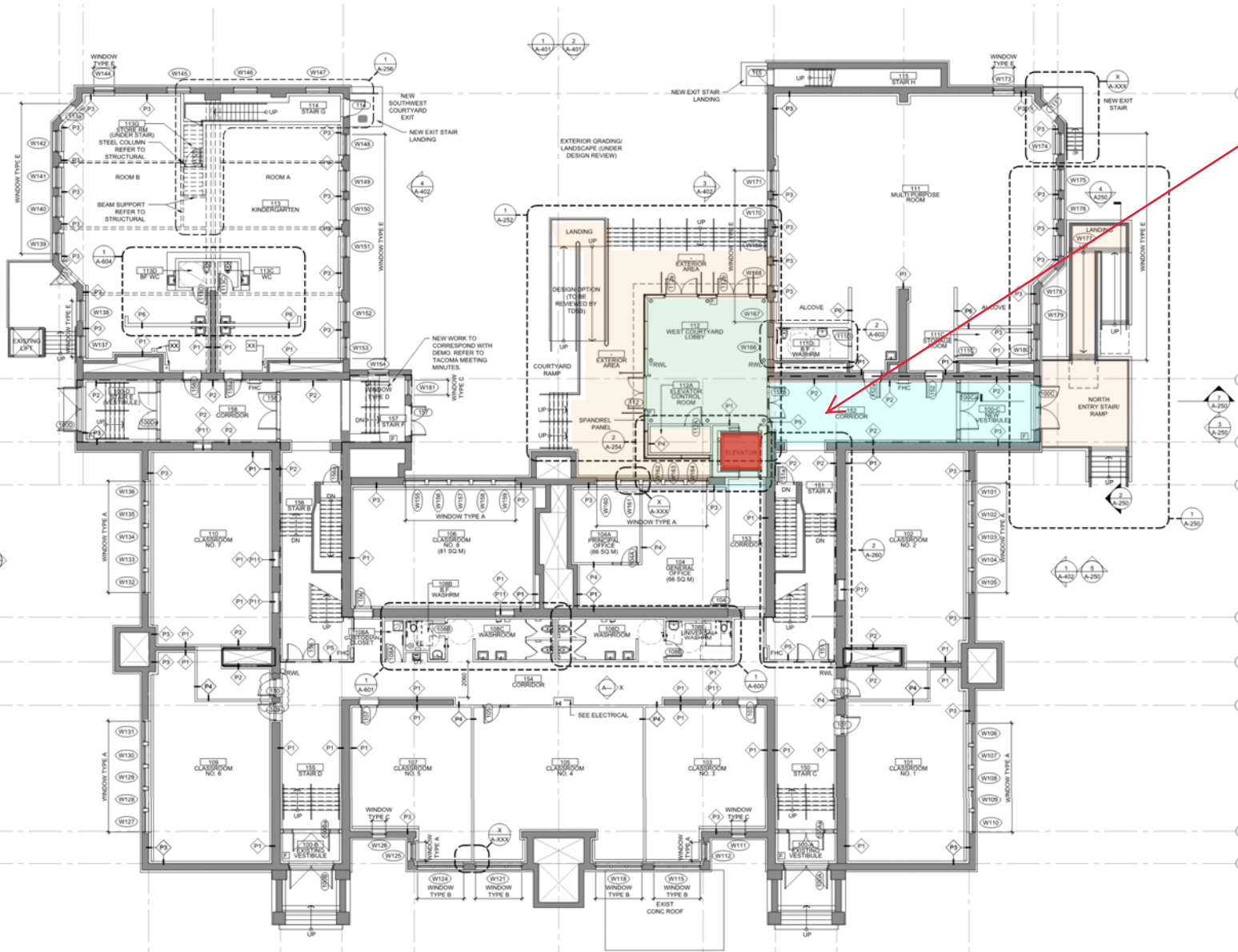


GROUND FLOOR – NEW WORK

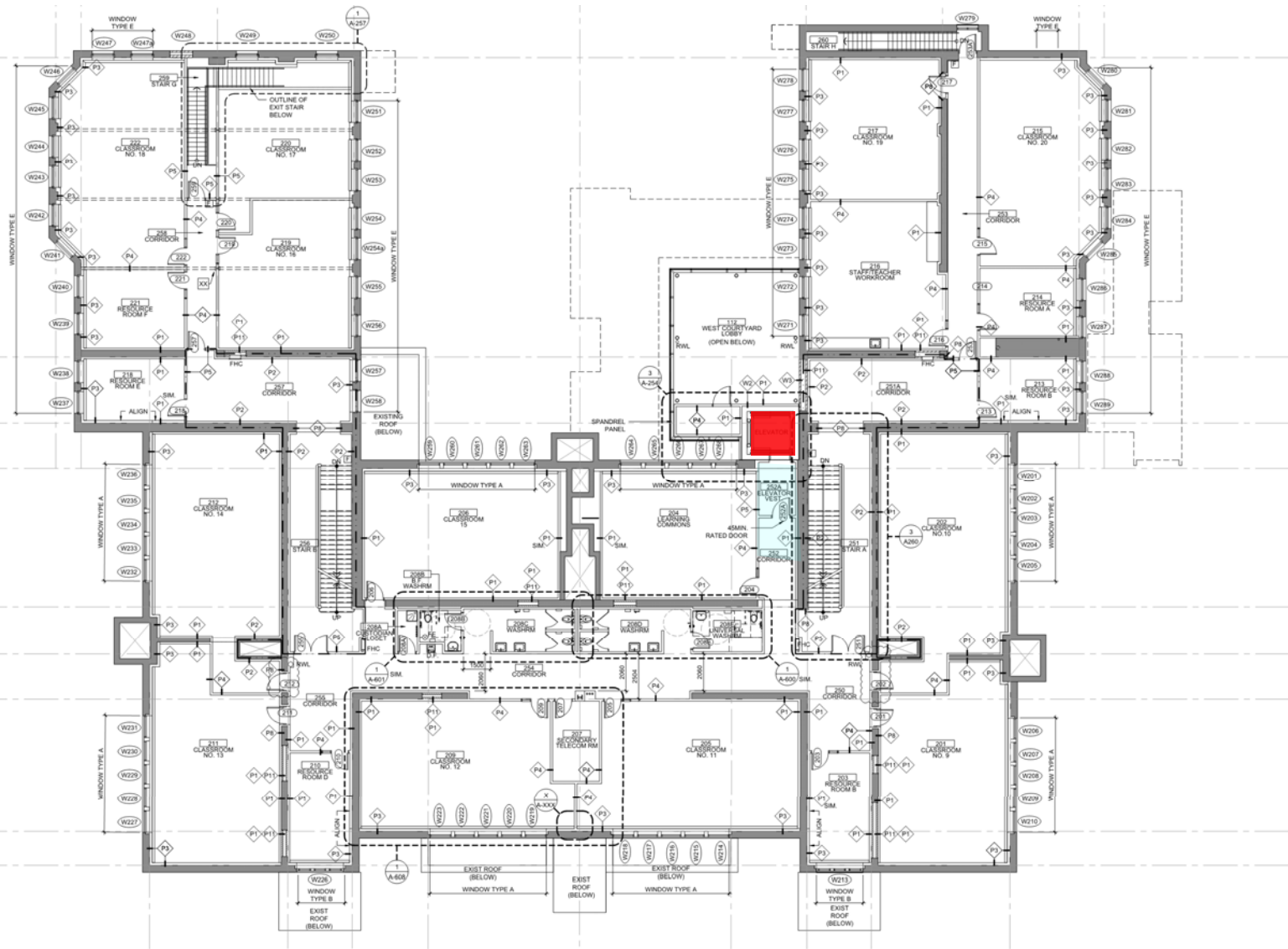
APPENDIX A - Ramp, Vestibule, Elevator
& modified entrance area shown

Ground floor new work updates includes:

- Development of ramp and stair on north entry
- Development of new internal exit stair at SWA
- Development of the new exterior courtyard lobby addition
- Update on vestibule at existing exit 5&6 towards the West Courtyard
- Update on elevator details and elevator control room
- Updates on north-south classroom entries with use of existing masonry opening that require enlargement
- Coordination with M/E/S to-date



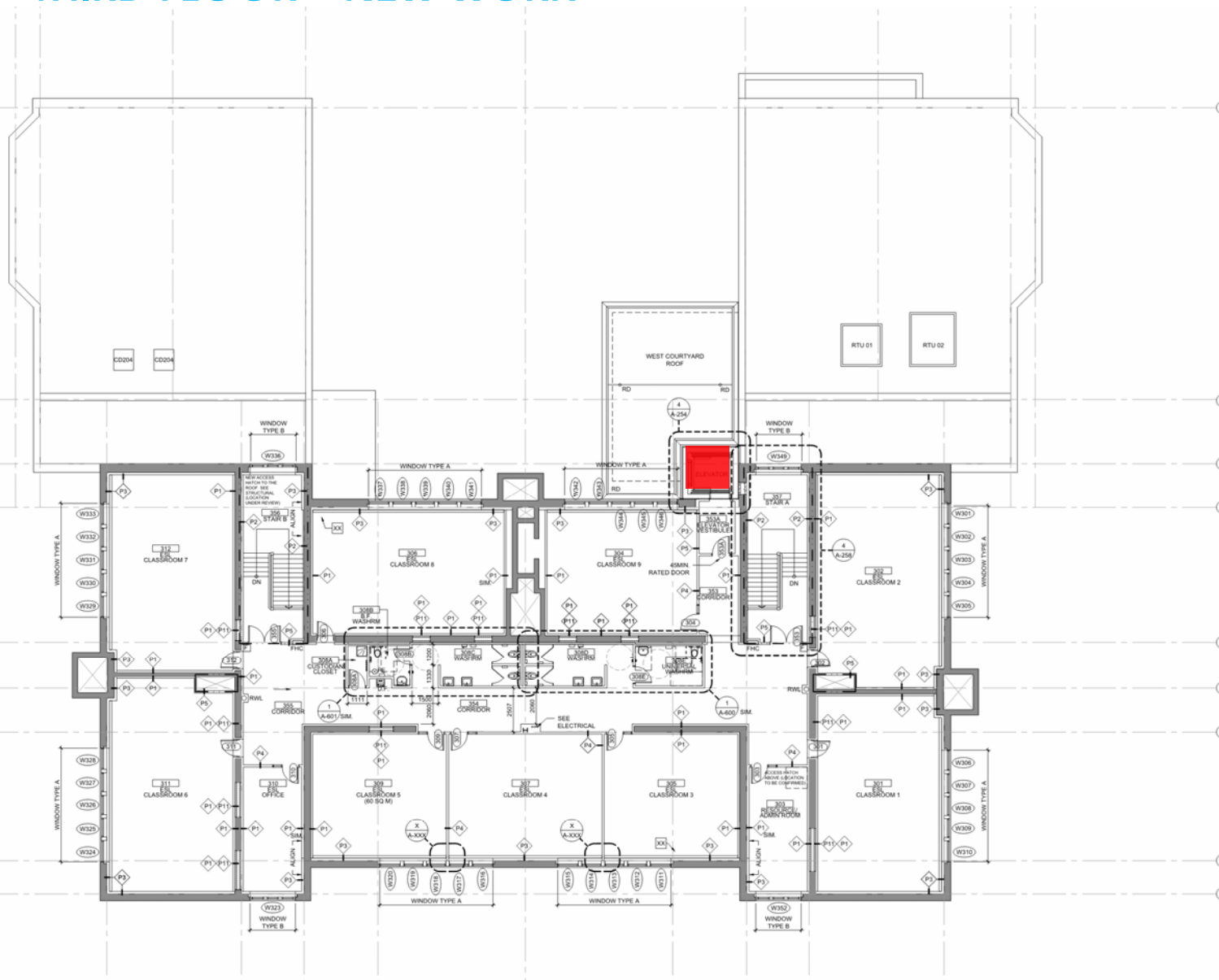
SECOND FLOOR – NEW WORK



Second floor new work updates includes:

- Updates on the classroom configuration at SWA to accommodate new internal exit stair at SWA
- New elevator vestibule addition required by code at corridor
- Updates on north-south classroom entries with use of existing masonry opening that require enlargement
- Coordination with M/E/S to-date

THIRD FLOOR – NEW WORK

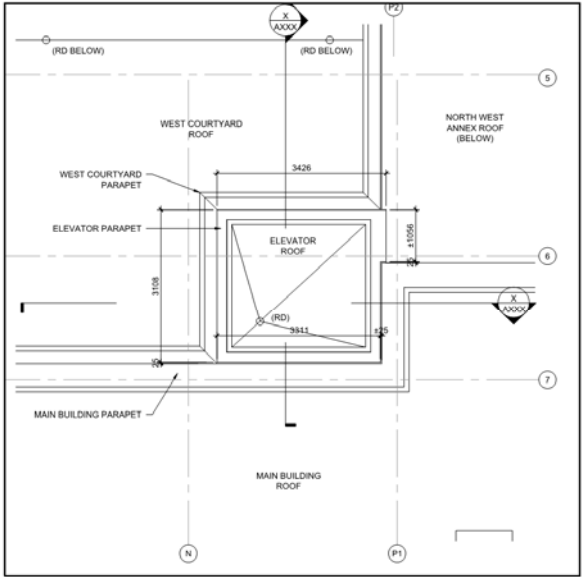


Third floor new work updates includes:

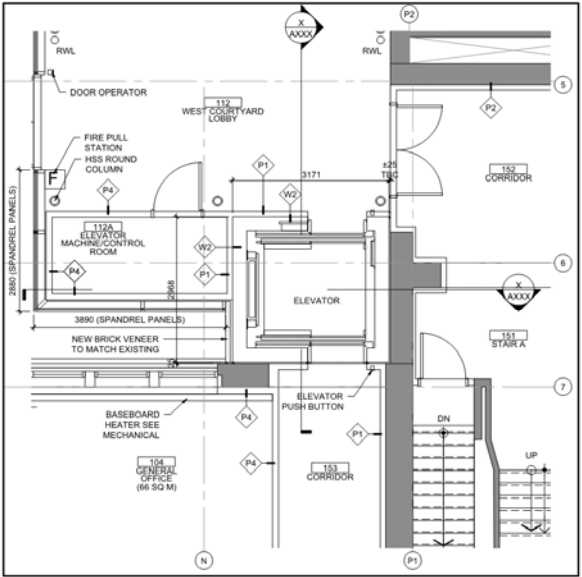
- New elevator vestibule addition required by code at corridor
- Updates on north-south classroom entries with use of existing masonry opening that require enlargement
- Coordination with M/E/S to-date

A full-size, 4-stop elevator according to the specs by Jon Soberman included in the DBM. Designed with doors opening at the side to provide adequate access for patient stretcher. Coordination ongoing with elevator consultant.

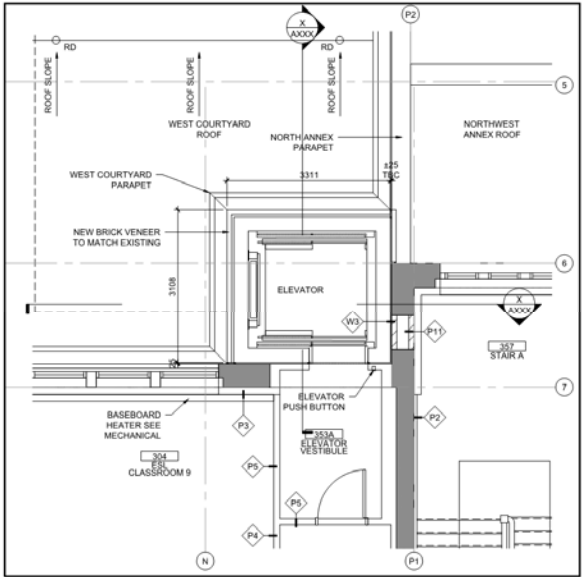
ELEVATOR TECHNICAL DATA	
NUMBER	1
CAPACITY (LBS)	3500
SPEED (FPM)	150
TYPE	MRL TRACTION
OPENINGS	FRONT AND REAR
FLOOR SERVED	GROUND, SECOND, THIRD FLR LEVELS
DOOR SIZE (WXH)	3'-6" X 7'-0"
DOOR TYPE	SIDE OPENING
HOISTWAY (WXD)	8'-6" X 7'-10"
CAB INSIDE (W X D)	~6'-8" X ~5'-5"
CAB HEIGHT (OVERALL/DROP CEILING)	9'-0" / 8'-6"
MACHINE ROOM LOCATION	ADJACENT @ ANY LEVEL
MACHINE ROOM SIZE (W X D)	~5'-0" X ~7'-0"
MACHINE ROOM HEIGHT	8'-0"
OVERHEAD (SEE NOTE)	16'-0"
PIT DEPTH	5'-0"
ELECTRICAL (AMPS/ELEVATOR) - BASED ON 600 VOLTS	START : 40 / Run: 15 HP; 10
MECHANICAL (BTU/HOUR/ELEVATOR)	5,000
STRUCTURAL (KN/ELEVATOR):	
AT CAR BUFFER (PIT)	210
AT COUNTERWEIGHT BUFFER (PIT)	170
OVERHEAD	220



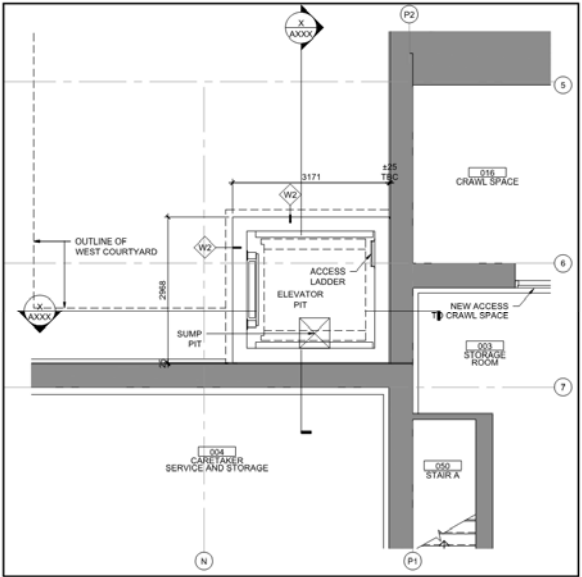
5 PLAN DETAIL - ELEVATOR (ROOF LEVEL)
A-254 1:50



2 PLAN DETAIL - ELEVATOR (GROUND FLOOR LEVEL)
A-254 1:50



4 PLAN DETAIL - WEST ELEVATOR (THIRD FLOOR LEVEL)
A-254 1:50

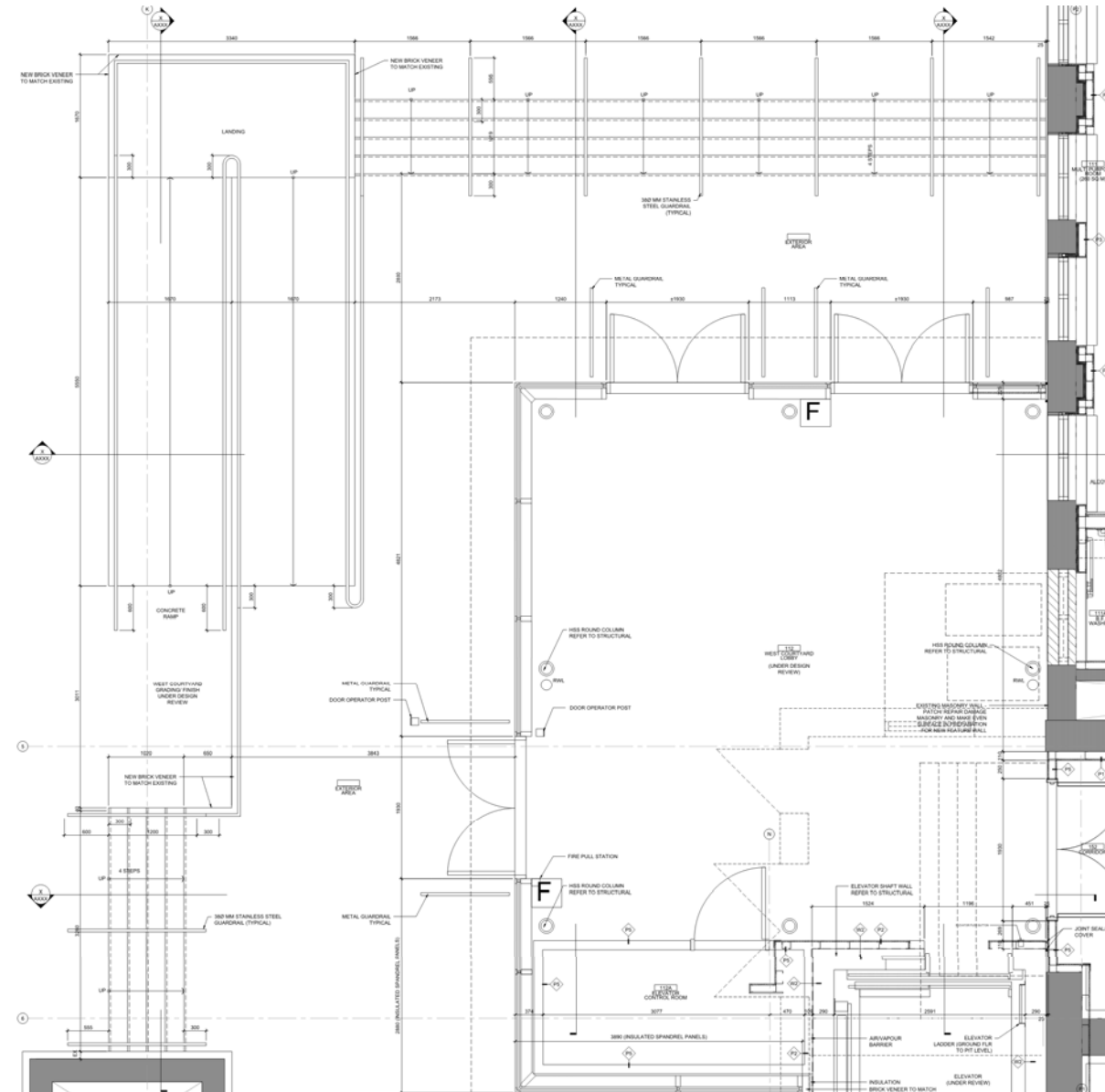


1 PLAN DETAIL - ELEVATOR (BASEMENT, PIT LEVEL)
A-254 1:50

NEW EXTERIOR ADDITION: VESTIBULE/ELEVATOR LOBBY IN THE WEST COURTYARD

New exterior addition: vestibule/elevator lobby in the West Courtyard including repairs to existing brick walls and allowance for premium finishes and signage

- New glazed vestibule specialty ceiling treatments or shaping, special lighting at the interior.
- Assume new addition is double height. New roof line will be no more than that of the Annex roof/parapet level.
- Exterior of the building at the entry including at the ramp, soffit extension and lighting from the soffit, special materials or treatments to walls, artwork and signage.
- Allow frosted glazing at top; bird safety film at grade level
- Further coordination required with M/E/S.



ENLARGED PLAN OF THE WEST COURTYARD LOBBY / EXTERIOR RAMP AND STAIR

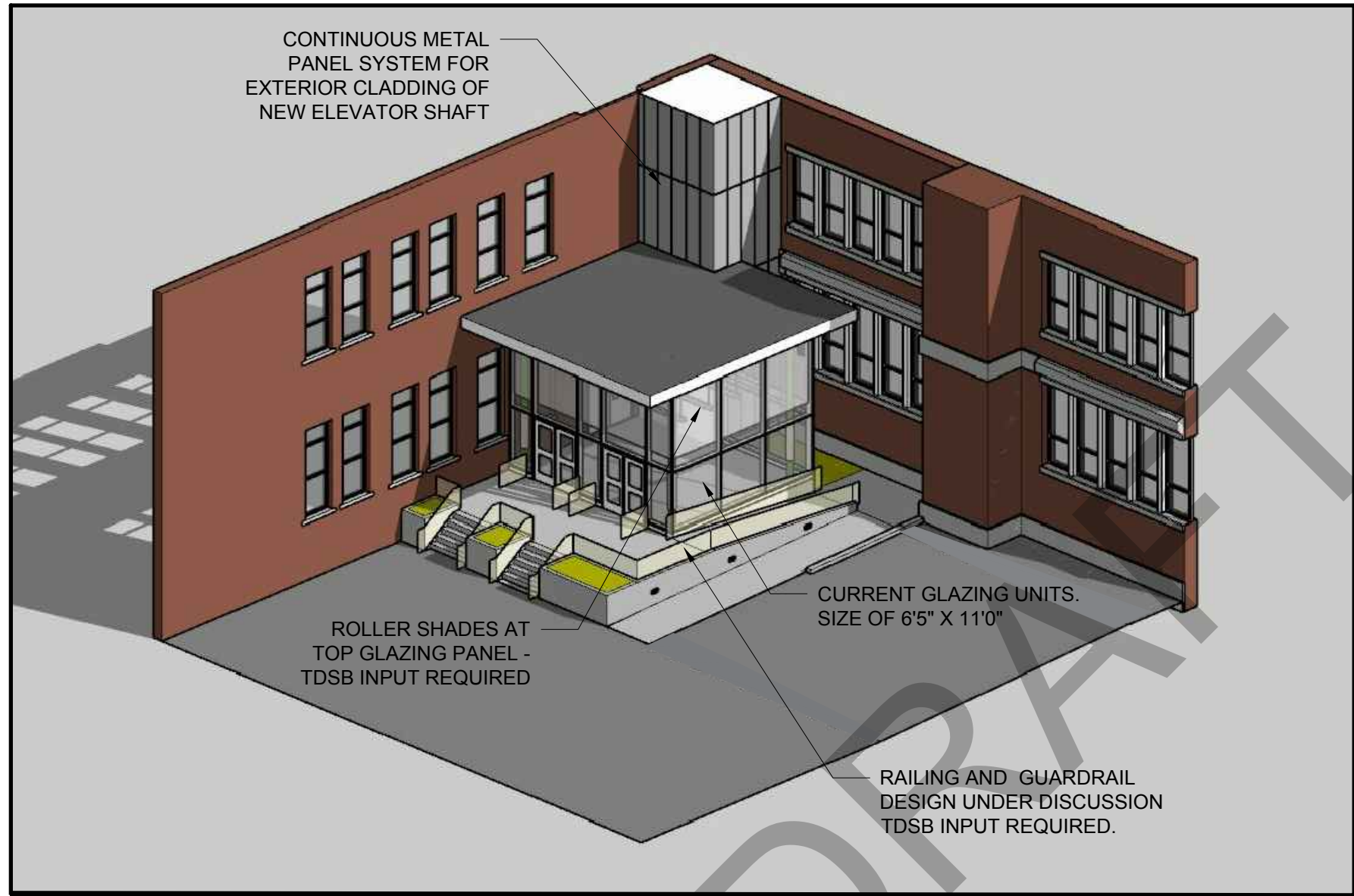
- (1) Ramps located in a barrier-free path of travel shall,
 - (a) have a minimum width of 900 mm between handrails,
 - (b) have a maximum gradient of 1 in 12,
 - (c) have a level area of at least 1 670 mm by 1 670 mm at the top and bottom of a ramp and where a door is located in a ramp, so that the level area extends at least 600 mm beyond the latch side of the door opening, except that where the door opens away from the ramp, the area extending beyond the latch side of the door opening may be reduced to 300 mm,
 - (d) have a level area at least 1 670 mm long and at least the same width as the ramp, at intervals of not more than 9 m along its length.
- (3) Floors or walks in barrier-free path of travel having a slope steeper than 1 in 20 shall be designed as ramps. (see Appendix A.)

JONES AVENUE SCHOOL
540 JONES AVE, TORONTO, ON
TORONTO DISTRICT SCHOOL BOARD

FOR DISCUSSION

SK10A

P:\2020\2004 Jones Ave School\Drawings\West Courtyard Lobby\2004-SK010A-COVER.dwg Nov 30, 2020-3:25pm



1 3D STUDY VIEW LOOKING NORTH EAST
SK10B NTS

JONES AVENUE SCHOOL

540 JONES AVE, TORONTO, ON

TORONTO DISTRICT SCHOOL BOARD

VIEW OF THE WEST COURTYARD LOBBY
/ EXTERIOR RAMP AND STAIR

FOR DISCUSSION



TAYLOR HAZELL ARCHITECTS LTD.

333 Adelaide Street West
5th Floor
Toronto, Ontario, M5V 1R5
Telephone: (416) 862-2694
Facsimile: (416) 862-8401

01	20.11.30	FOR TDSB REVIEW
DRAWN BY: TW		CHECKED BY

SK10B

DATE
AS NOTED

P:\2020\2004 Jones Ave School\Drawings\West Courtyard Lobby\2004-SK10A-COVER.dwg Nov 30, 2020-3:25pm



1 3D STUDY VIEW LOOKING NORTH
SK10C NTS

JONES AVENUE SCHOOL
540 JONES AVE, TORONTO, ON
TORONTO DISTRICT SCHOOL BOARD

VIEW OF THE WEST COURTYARD LOBBY
/ EXTERIOR RAMP AND STAIR

FOR DISCUSSION



TAYLOR HAZELL ARCHITECTS LTD.
333 Adelaide Street West
5th Floor
Toronto, Ontario, M5V 1R5
Telephone: (416) 862-2694
Facsimile: (416) 862-8401

			SK10C
01	20.11.30	FOR TDSB REVIEW	
DRAWN BY: TW		CHECKED BY:	DATE AS NOTED

P:\2020\2004 Jones Ave School\Drawings\West Courtyard Lobby\2004-SK010A-COVER.dwg Nov 30, 2020 3:25pm



1 3D STUDY VIEW LOOKING EAST
SK10D NTS

JONES AVENUE SCHOOL

540 JONES AVE, TORONTO, ON

TORONTO DISTRICT SCHOOL BOARD

VIEW OF THE WEST COURTYARD LOBBY
/ EXTERIOR RAMP AND STAIR

FOR DISCUSSION



TAYLOR HAZELL ARCHITECTS LTD.

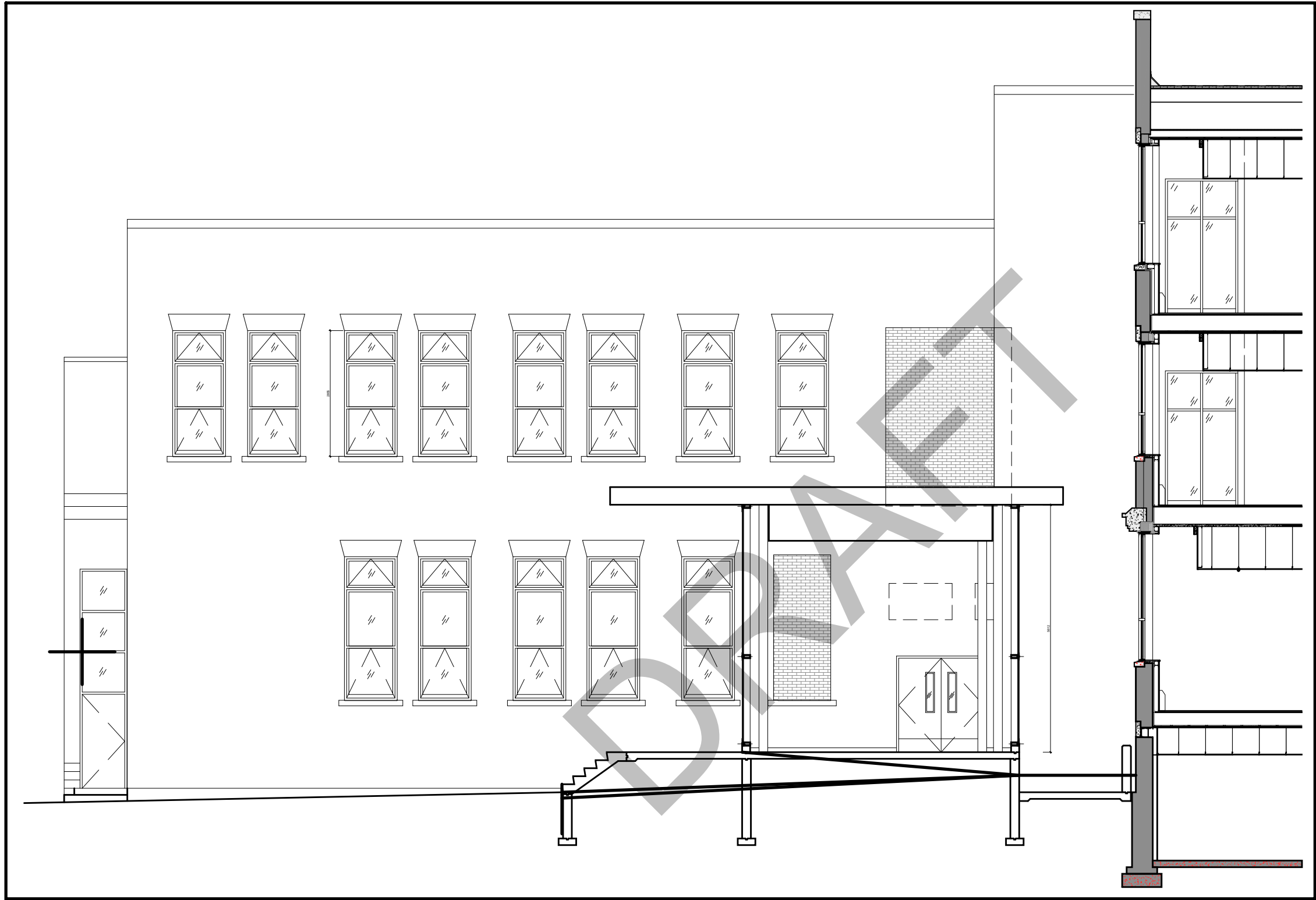
333 Adelaide Street West
5th Floor
Toronto, Ontario, M5V 1R5
Telephone: (416) 862-2694
Facsimile: (416) 862-8401

01	20.11.30	FOR TDSB REVIEW
DRAWN BY: TW		CHECKED BY:

SK10D

DATE
AS NOTED

P:\2020\2004 Jones Ave School\Drawings\West Courtyard Lobby\2004-SK010A-COVER.dwg Nov 30, 2020-3:25pm



1
SK10E

CROSS SECTION OF NEW WEST COURTYARD LOBBY

1:100

JONES AVENUE SCHOOL

540 JONES AVE, TORONTO, ON

TORONTO DISTRICT SCHOOL BOARD

CROSS SECTION WEST COURTYARD LOBBY
/ ELEVATOR

FOR DISCUSSION



TAYLOR HAZELL ARCHITECTS LTD.

333 Adelaide Street West
5th Floor
Toronto, Ontario, M5V 1R5
Telephone: (416) 862-2694
Facsimile: (416) 862-8401

01	20.11.30	FOR TDSB REVIEW
DRAWN BY: TW		CHECKED BY

SK10E

DATE
AS NOTED