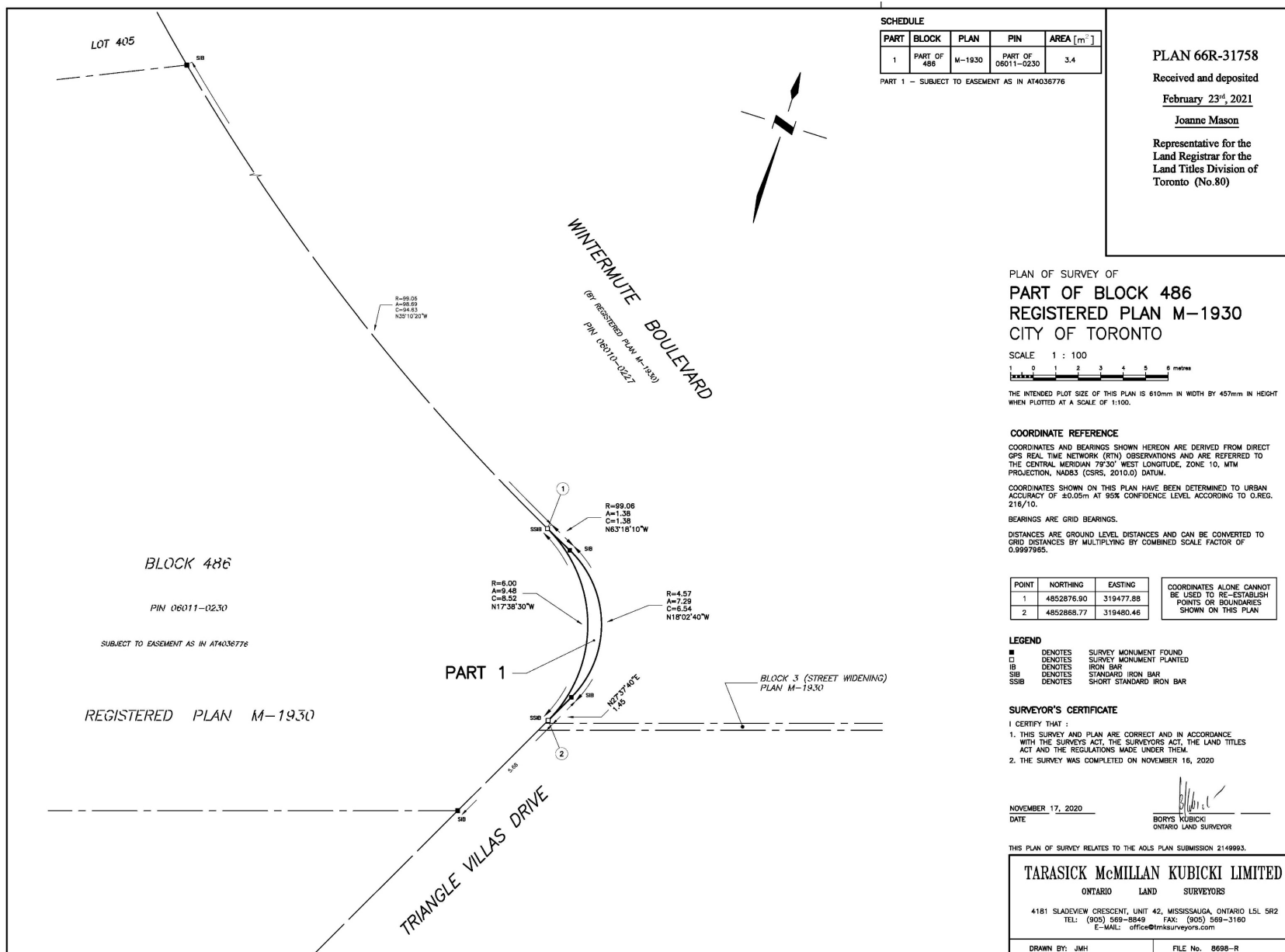


Terry Fox PS – Registered Plan Showing the Land Conveyance



SCHEDULE

PART	BLOCK	PLAN	PIN	AREA [m ²]
1	PART OF 486	M-1930	PART OF 06011-0230	3.4

PART 1 - SUBJECT TO EASEMENT AS IN AT4036776

PLAN 66R-31758

Received and deposited

February 23rd, 2021

Joanne Mason

Representative for the
Land Registrar for the
Land Titles Division of
Toronto (No.80)

PLAN OF SURVEY OF

PART OF BLOCK 486

REGISTERED PLAN M-1930

CITY OF TORONTO

SCALE 1 : 100



THE INTENDED PLOT SIZE OF THIS PLAN IS 610mm IN WIDTH BY 457mm IN HEIGHT WHEN PLOTTED AT A SCALE OF 1:100.

COORDINATE REFERENCE

COORDINATES AND BEARINGS SHOWN HEREON ARE DERIVED FROM DIRECT GPS REAL TIME NETWORK (RTN) OBSERVATIONS AND ARE REFERRED TO THE CENTRAL MERIDIAN 79°30' WEST LONGITUDE, ZONE 10, NTM PROJECTION, NAD83 (CSRS, 2010.0) DATUM.

COORDINATES SHOWN ON THIS PLAN HAVE BEEN DETERMINED TO URBAN ACCURACY OF $\pm 0.05m$ AT 95% CONFIDENCE LEVEL ACCORDING TO O.REG. 215/10.

BEARINGS ARE GRID BEARINGS.

DISTANCES ARE GROUND LEVEL DISTANCES AND CAN BE CONVERTED TO GRID DISTANCES BY MULTIPLYING BY COMBINED SCALE FACTOR OF 0.9997905.

POINT	NORTHING	EASTING
1	4652876.90	319477.88
2	4852868.77	319480.46

COORDINATES ALONE CANNOT
BE USED TO RE-ESTABLISH
POINTS OR BOUNDARIES
SHOWN ON THIS PLAN

LEGEND

■	DENOTES	SURVEY MONUMENT FOUND
□	DENOTES	SURVEY MONUMENT PLANTED
IB	DENOTES	IRON BAR
SIB	DENOTES	STANDARD IRON BAR
SSIB	DENOTES	SHORT STANDARD IRON BAR

SURVEYOR'S CERTIFICATE

I CERTIFY THAT:

- THIS SURVEY AND PLAN ARE CORRECT AND IN ACCORDANCE WITH THE SURVEYS ACT, THE SURVEYORS ACT, THE LAND TITLES ACT AND THE REGULATIONS MADE UNDER THEM.
- THE SURVEY WAS COMPLETED ON NOVEMBER 16, 2020

NOVEMBER 17, 2020
DATE

BORYS KUBICKI
ONTARIO LAND SURVEYOR

THIS PLAN OF SURVEY RELATES TO THE ADSL PLAN SUBMISSION 2149993.

TARASICK McMILLAN KUBICKI LIMITED
ONTARIO LAND SURVEYORS

4181 SLADEVIEW CRESCENT, UNIT 42, MISSISSAUGA, ONTARIO L5L 5R2
TEL: (905) 569-8849 FAX: (905) 569-3160
E-MAIL: office@tmksurveyors.com

DRAWN BY: JMH

FILE No. 8698-R