

Earl Haig Secondary School

100 Princess Ave., North York, ON M2N 3R7

(416) 395-3210

Accessibility survey date: June 2014



For TDSB staff only: summary,
site plan, and floor plans

Introduction

The information provided below is based on a survey of Earl Haig SS conducted in June 2014 and is for reference only. All visitors to the school should contact the main office in advance to verify access and arrange for necessary accommodations.

Earl Haig SS has been designated Accessible. For definitions of designations and instructions on how to use the accessibility drawings attached, please see page 9.

Summary

Earl Haig SS has numerous amenities that enable accessibility to most parts of the building. All entrances are level and three are equipped with power-operated doors. All floors are accessible by elevators. Keys are required for the elevators and washrooms. Visitors should obtain keys from the main office or arrange to have the washrooms unlocked.

Exterior

Parking: Two designated parking spaces available with easy access to school entrance.

Pathways: Most exterior routes are accessible, with no obstructions.

Entrances: #1, #7 and #10 are equipped with power-operated doors; entrance # 7, located at the rear of the school, is the designated drop-off area.

Accessibility: Features and Barriers

Interior

Floor Access: This school contains two elevators allowing access to all floors. These elevators require key access.

Specialized Rooms:

Main Office: Somewhat accessible; no power-operated door.

Library: Somewhat accessible; no power-operated door.

Cafeteria: Somewhat accessible; no power-operated door.

General Purpose/Gymnasium: Somewhat accessible; no power-operated door.

Auditorium: Accessible; power-operated door is located at the end of the ramp.

Pool: N/A.

Washrooms: School is equipped with eleven accessible washrooms. Two are designated universal washrooms that are locked. There are no visual emergency alarm devices.

Other Information

- There are special markers on the main stairs for visually impaired users.

Contents

Legend	3
Site Plan	4
Basement Floor	5
1st Floor	6
2nd Floor	7
3rd Floor	8
Using the Accessibility Drawings	9
Accessibility Definitions	11

Accessibility: Features and Barriers

Legend



Exterior door: entrance numbers on a square yellow sign.



Intercom: electrical device that allows two-way communication with the main office.



Level entrance: entrance without stairs/steps.



Stepped entrance: entrance with stairs/steps.



Area of safe refuge: location in a building for disabled occupants to go during a fire alarm as part of the evacuation process.



Doorway



Elevator/lift



Recommended washroom (male/female) for disabled individuals



Power-operated door



Ramp



Stairs



Recommended pathway for disabled individuals. Power-operated door may or may not be present.



Embedded photo: click this icon on the drawing to view a photo of the area.



Floor level accessible by steps or stair.



Various instructional administrative service rooms.



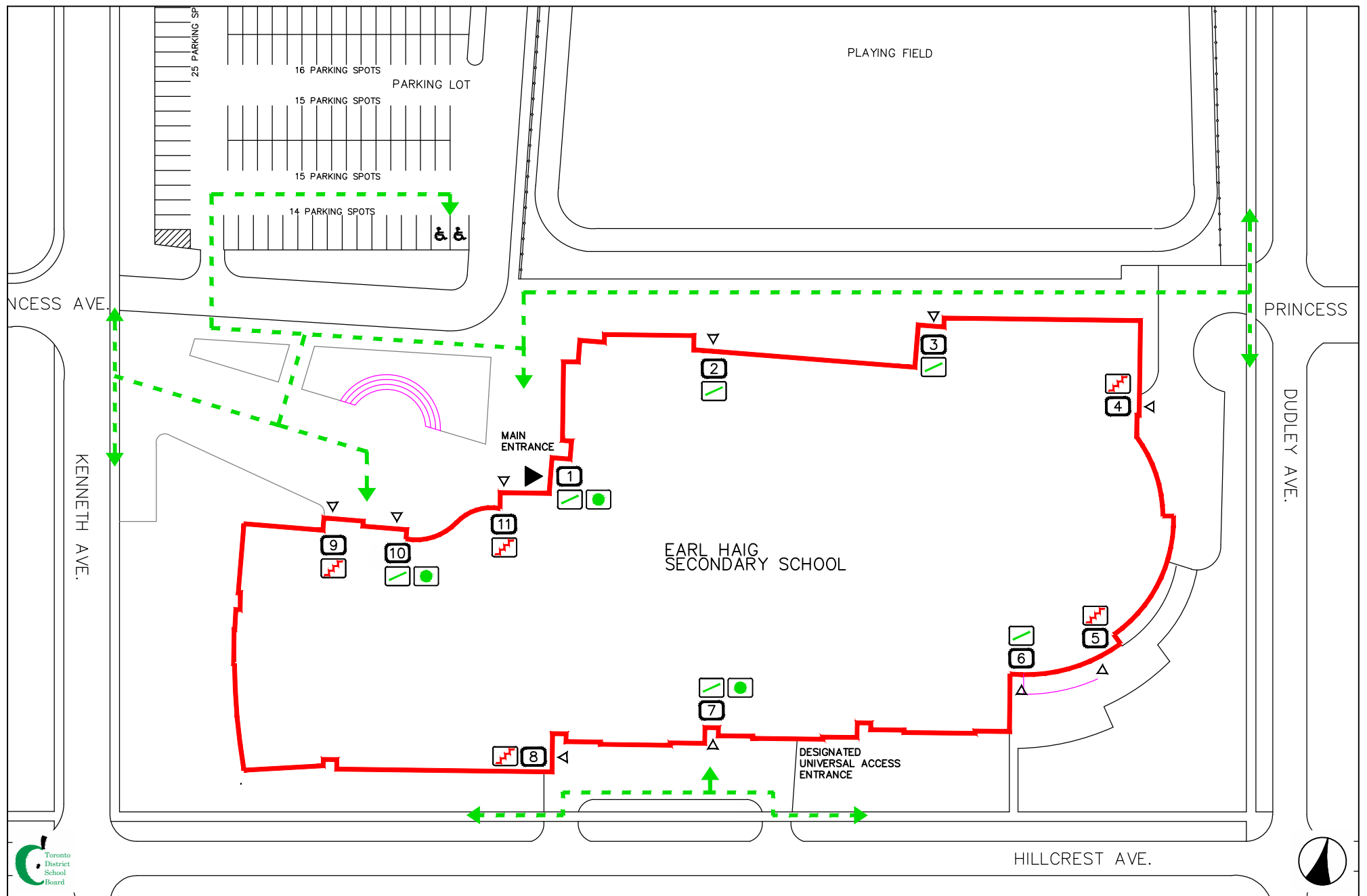
Main entrance



Accessible parking



Bus stop



Facility
Earl Haig Secondary School

Address
100 Princess Avenue
North York

M2N 3R7

Sheet Title
Site
Accessibility Plan

Facility #
0112

Last Update
2014-12-15

Legend

XX EXTERIOR DOOR LABEL

▼ MAIN ENTRANCE

▽ EXTERIOR DOOR

✓ LEVEL ENTRANCE

⬆ STEPPED ENTRANCE

● DOOR OPERATOR

➡ RECOMMENDED PATH (DIRECTION)

≡ INTERCOM

🗨 EMBEDDED PHOTO

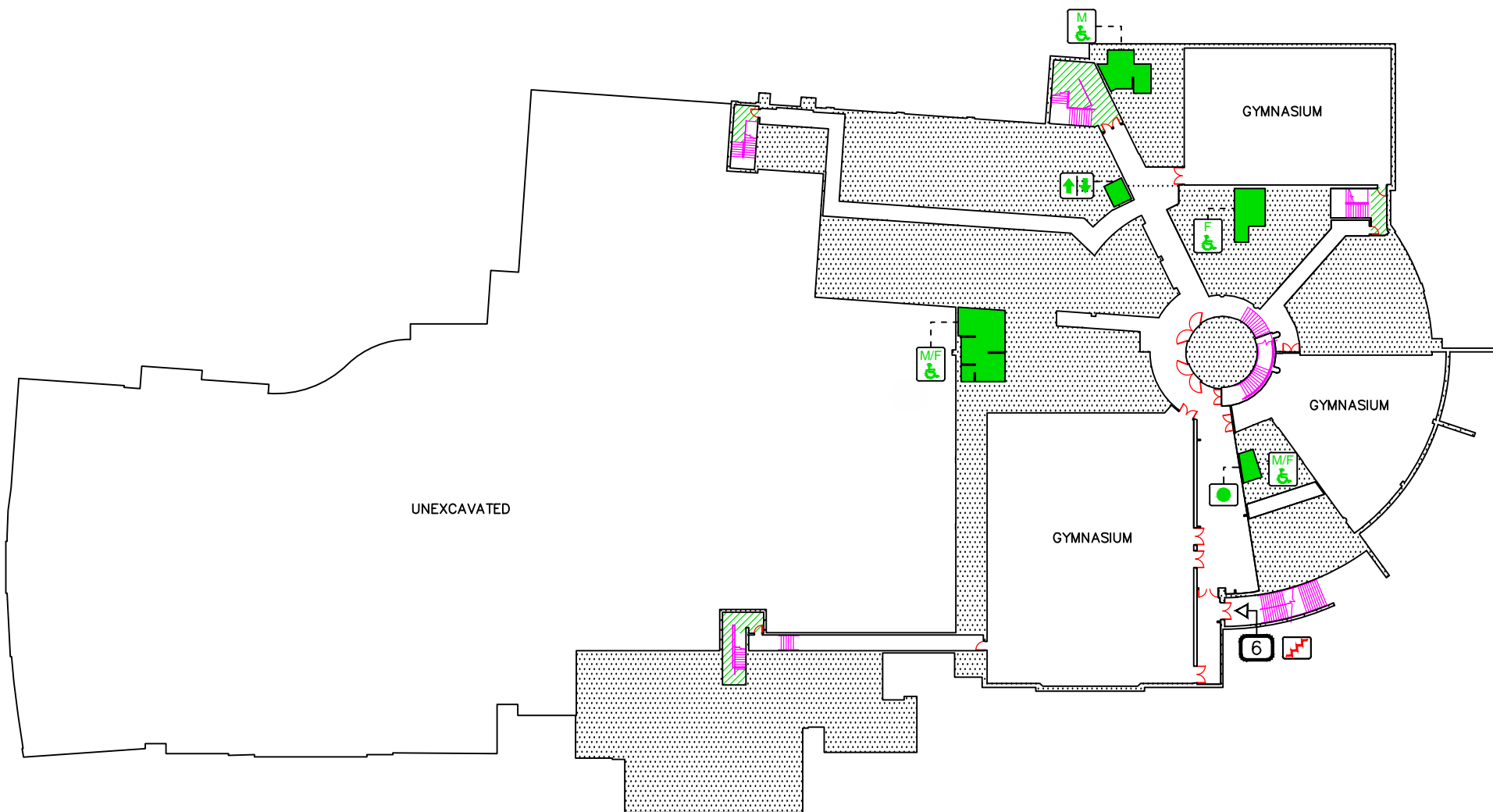
ⓑ BUS STOP

♿ ACCESSIBLE PARKING

▲ RAMP

🪜 STAIRS

Page 4 of 11



AREA OF
SAFE REFUGE

AREA ACCESSIBLE BY
MEANS OF STEPS/STAIRS

VARIOUS INSTRUCTIONAL,
ADMIN. AND SERVICE ROOMS



Facility

Earl Haig Secondary School

Facility #

0112

Address

100 Princess Avenue
North York

M2N 3R7

Sheet Title

Basement
Accessibility Plan

Last Update

2014-12-15

Legend

XX EXTERIOR DOOR
LABEL

MAIN ENTRANCE

EXTERIOR DOOR

LEVEL ENTRANCE

STEPPED
ENTRANCE

DOOR OPERATOR

DOORS

ELEVATOR/LIFT

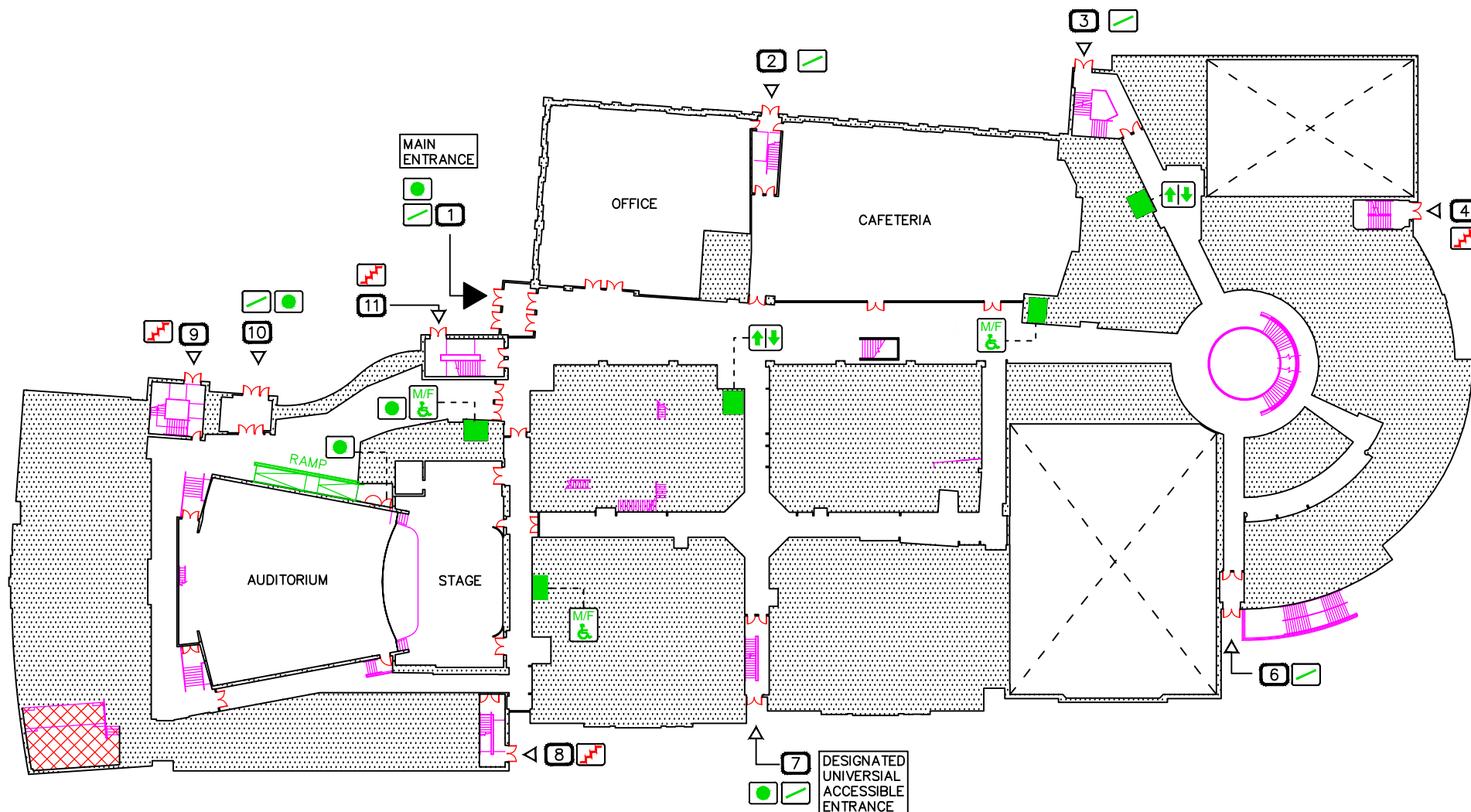
EMBEDDED PHOTO

RECOMMENDED
WASHROOM
(MALE/FEMALE)

RAMP

STAIRS

Page 5 of 11



AREA OF SAFE REFUGE

AREA ACCESSIBLE BY MEANS OF STEPS/STAIRS

VARIOUS INSTRUCTIONAL, ADMIN. AND SERVICE ROOMS



Facility
Earl Haig Secondary School

Address
100 Princess Avenue
North York

M2N 3R7

Sheet Title
1st Floor
Accessibility Plan

Facility #
0112

Last Update
2014-12-15

Legend

XX EXTERIOR DOOR LABEL

MAIN ENTRANCE

EXTERIOR DOOR

LEVEL ENTRANCE

STEPS/STAIRS

DOOR OPERATOR

DOORS

ELEVATOR/LIFT

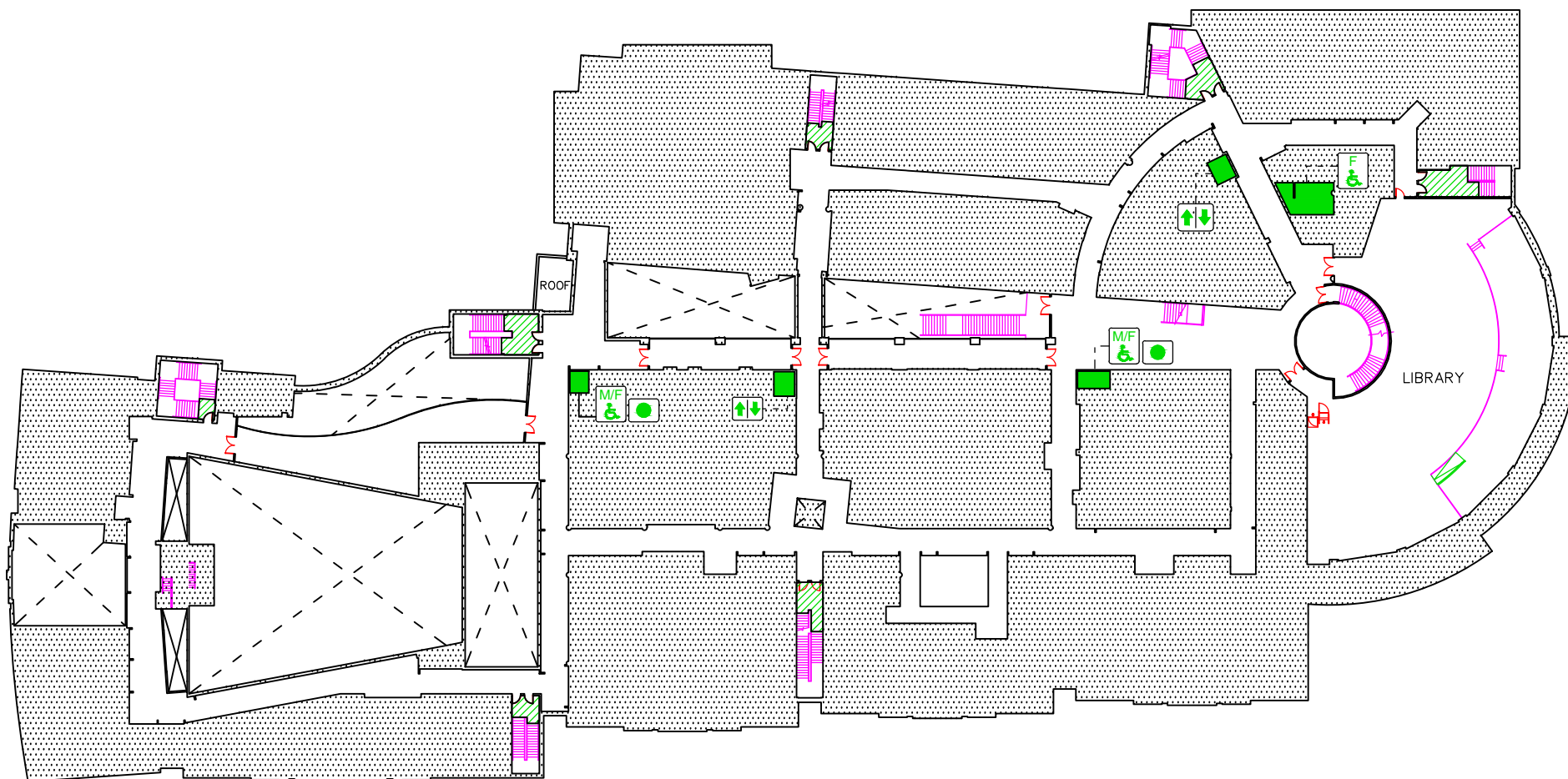
EMBEDDED PHOTO

RECOMMENDED WASHROOM (MALE/FEMALE)

RAMP

STAIRS

Page 6 of 11



AREA OF
SAFE REFUGE

AREA ACCESSIBLE BY
MEANS OF STEPS/STAIRS

VARIOUS INSTRUCTIONAL,
ADMIN. AND SERVICE ROOMS



Facility

Earl Haig Secondary School

Facility #

0112

Address

100 Princess Avenue
North York

M2N 3R7

Sheet Title

2nd Floor
Accessibility Plan

Last Update

2014-12-15

Legend

EXTERIOR DOOR
LABEL

MAIN ENTRANCE

EXTERIOR DOOR

LEVEL ENTRANCE

STEPED
ENTRANCE

DOOR OPERATOR

DOORS

ELEVATOR/LIFT

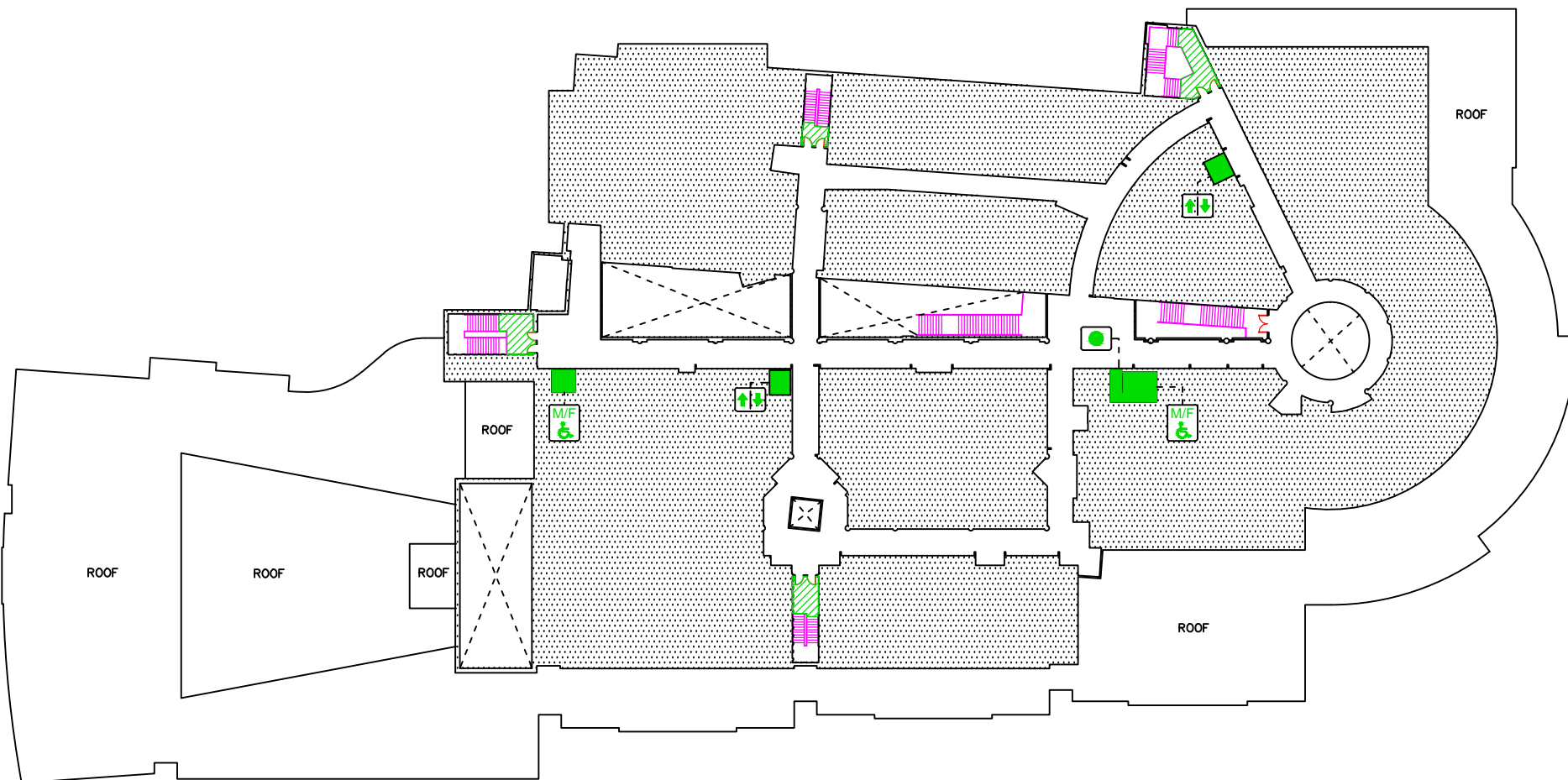
EMBEDDED PHOTO

RECOMMENDED
WASHROOM
(MALE/FEMALE)

RAMP

STAIRS

Page 7 of 11



AREA OF
SAFE REFUGE

AREA ACCESSIBLE BY
MEANS OF STEPS/STAIRS

VARIOUS INSTRUCTIONAL,
ADMIN. AND SERVICE ROOMS



Facility

Earl Haig Secondary School

Facility #

0112

Address

100 Princess Avenue
North York

M2N 3R7

Sheet Title

3rd Floor
Accessibility Plan

Last Update

2014-12-15

Legend

EXTERIOR DOOR
LABEL

MAIN ENTRANCE

EXTERIOR DOOR

LEVEL ENTRANCE

STEPPED
ENTRANCE

DOOR OPERATOR

DOORS

ELEVATOR/LIFT

EMBEDDED PHOTO

RECOMMENDED
WASHROOM
(MALE/FEMALE)

RAMP

STAIRS

Page 8 of 11




Using the Accessibility Drawings

Introduction

The TDSB has produced drawings to show accessible features as well as barriers for each of its buildings. This information will be useful for students, staff, parents, and community members — some of whom have physical disabilities and need to know the features and barriers of our buildings.

The current Ontario Building Code (OBC) is generally used as the basis for the accessibility features included in the drawings. However, features that do not fully conform to current regulations are nevertheless identified. A legend noting features such as power-operated doors and elevators accompanies each set of drawings.

Entrances

Entrance numbers are provided on the drawings for reference and correspond to numbers posted inside and outside each public entrance. Entrance numbers have an associated icon:  (denoting a flush condition) or  (denoting a stepped condition). The approach to a flush entrance may be ramped, sloped, or flat, but has no appreciable height differential at the doorway. A stepped entrance is one with an appreciable step not compliant with OBC requirements for level access. Power-operated doors, if present, are identified with an  icon.

To ensure student safety and security, elementary school buildings have a locked door policy. Visitors are directed to enter through the building's main entrance door after contacting the main office using the intercom provided. Where applicable, the drawings will indicate a recommended path to the main entrance doors (i.e., an arrow pointing to the main door). A recommended path has **not** been shown **to** the main entrance where



- the main entrance is not level, **or**
- the path to the main entrance has a barrier.

If a level path exists between the parking lot and a nearby level entrance, the path to the parking lot from that doorway is indicated on the drawings regardless of whether there is a power-operated door present.

At secondary schools, intercoms are not present. Usually the doors closest to the parking lot or the main entrance doors are open during school operating hours. Recommended paths are shown to these doors if the path and doorway are level and there is a power-operated door present.

Using the Accessibility Drawings (cont'd)


Interior Access

The 1st floor (at grade) of the school is assumed to be accessible, even if there is no recommended path to the building. Access to floors other than the 1st floor is indicated by an icon denoting an elevator  or ramp  if present. Stairway locations are highlighted on the drawings to indicate access to floor levels; this information is included for individuals who do not require the use of a mobility device.

The main office, community-use areas, and rotation-program areas are labelled on the floor plans for ease of navigation. Various instructional, administrative, and service rooms are also indicated.

Doors at corridors and stairwells are marked on the drawings. If a power-operated door is not present (icon is absent), the doors may present a barrier to some individuals. Power-operated door devices may be push-button, hold-open, or motion-detection types.

Washrooms

Washrooms that are moderately to highly accessible are recommended and identified by a  icon. The respective use for gender is also provided; male, female, or universal is denoted by a corresponding letter M, F or M/F.

Fire Safety Planning

Areas of Safe Refuge are locations where persons with disabilities begin their vertical-descent stage of evacuation upon fire alarm. These have been identified on the drawing where present. They are located at EXIT stairwell landings on floors other than those at grade level, where the stairwell doors latch. Information regarding the use of Areas of Safe Refuge is found within each site's Fire Safety Plan.

Accessibility Designations

The following definitions of accessibility at TDSB sites focus on mobility. Where accommodations exist for people with limited sight and/or hearing, or other types of disabilities, they will be described on each site's accessibility profile. Because each person's requirements are unique, the designation is to be used as a guide only.



Accessible

A person who uses a mobility device can enter and move through the building to access all or most areas without assistance or with minimal assistance. To be deemed accessible,

- the building can be accessed by a barrier-free path,
- there is at least one level entry at a main entrance operated by a power-operated door,
- there is at least one barrier-free universal washroom on the main floor, and
- where the building has more than one level, there is an elevating device (such as a lift or passenger elevator), but access on all floors may be limited.



Somewhat Accessible

Somewhat accessible is our designation for buildings that are not fully accessible, but they are also not completely inaccessible. They have some features that make them partially accessible.

In a somewhat accessible building, a person who uses a mobility device can enter and move through the main floor of the building with minimal assistance. Barrier-free access to other floors is not guaranteed. Generally speaking, to be deemed somewhat accessible,

- the building can be accessed by a barrier-free path and there is at least one level entry to the building, which may or may not have power-operated doors, and
- there is at least one washroom that is somewhat barrier free.



Not Accessible

A person who uses a mobility device will either not be able to access the building or will require significant assistance. To be deemed not accessible,

- access to the building does not have a barrier-free path,
- there are no main entrances that are level, or